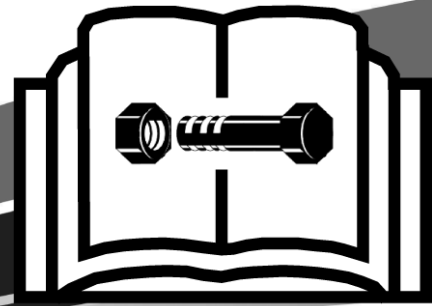


HOLE HAMMER[®]

1.8" (45mm), 2" (55mm), 2 1/2" (65mm), 3" (76mm), 3 1/3" (85mm)

Quarter-Turn Reverse Parts Manual



P1.00

VHH180/VHH180RT Serial No. 180001-

VHH200/VHH200RT Serial No. 110001-

VHH250/VHH250RT Serial No. 210001-

VHH300/VHH300RT Serial No. 310001-

VHH330/VHH330RT Serial No. 310001-

Order No. 105400YAK

McLAUGHLIN[®]

HOW TO USE THE MANUAL

This manual contains illustrations and parts lists of components and assemblies which make up the machine. Each page consists of the name of the assembly or component, a figure number, reference numbers, part numbers, part names, and the quantities of the parts used.

Assembly or component name helps identify the illustration and parts list for each figure. This name also helps locate the general area of the machine where the assembly or component can be located.

Figure numbers are used to identify each assembly or component and to group these assemblies or components into major categories.

Reference numbers shown in a column refer to the numbered parts in the illustration. This ties the part in the illustration to the part number and description in the parts list.

An asterisk indicates information about the item has changed since the previous release of the parts manual. A note in the Remarks column often explains the change.

Part numbers are used to identify individual parts or part assemblies.

Part descriptions provide the name of the part, plus additional information such as dimensional specifications and what parts are grouped together to form part assemblies, which helps you identify the part(s).

Quantities listed for each figure are only for that assembly or component and not the total used per machine.

This parts manual is not intended to be a complete guide for machine service or repairs. Contact your Vermeer dealer for any of your service or technical requirements.

ORDERING PARTS

Parts for repair or replacement are available through our network of authorized dealers located throughout the world.

Use only authorized Vermeer parts for repair or replacement. Always give the serial number and

model number of the machine for which parts are being ordered. When ordering parts for component(s), which are not manufactured by Vermeer Corporation, also give the serial number of that component(s). Order all parts by part number, part name, and quantity needed.

UPDATING AND REORDERING MANUALS

The parts lists, illustrations, and specifications in this manual are based on the latest information available at time of publication. Your machine may have product improvements and options not yet contained in this manual.

Vermeer Corporation reserves the right to make changes at any time without notice or obligation to you.

Your dealer will receive notice of these changes and can assist you with accurate parts identification when ordering.

A copy of this manual is supplied with each machine. Additional copies are available through your dealer. When ordering additional manuals, use the reorder number listed on the front cover and the quantity needed.

NOTICE TO OWNER – You are requested to notify Vermeer Corporation when you have purchased a **used** Vermeer machine. Notify the Customer Data Department by telephone: 800-829-0051 or 641-628-3141; email: customerdata@vermeer.com; internet: www.vermeer.com or www.vermeerag.com; or, letter: Customer Data Dept., Vermeer Corporation, PO Box 200, Pella IA 50219 USA. Upon request, an owner of a used Vermeer machine will receive one free set of Operator's, Maintenance and Parts manuals.

Decals - Section 1

Safety/Cosmetic Fig 1-1

VHH180 1.8" Components - Section 2

1.8" Quarter-Turn Reverse Pneumatic Piercing Tool..... Fig 2-1
1.8" VHH180 Service Tools Fig 2-2

VHH200 2" Components - Section 3

2" Quarter-Turn Reverse Pneumatic Piercing Tool Fig 3-1
2" VHH200 Service Tools Fig 3-2

VHH250 2 1/2" Components - Section 4

2 1/2" Quarter-Turn Reverse Pneumatic Piercing Tool Fig 4-1
2 1/2" VHH250 Service Tools Fig 4-2

VHH300 3" Components - Section 5

3" Quarter-Turn Reverse Pneumatic Piercing Tool Fig 5-1
3" VHH300 Service Tools Fig 5-2

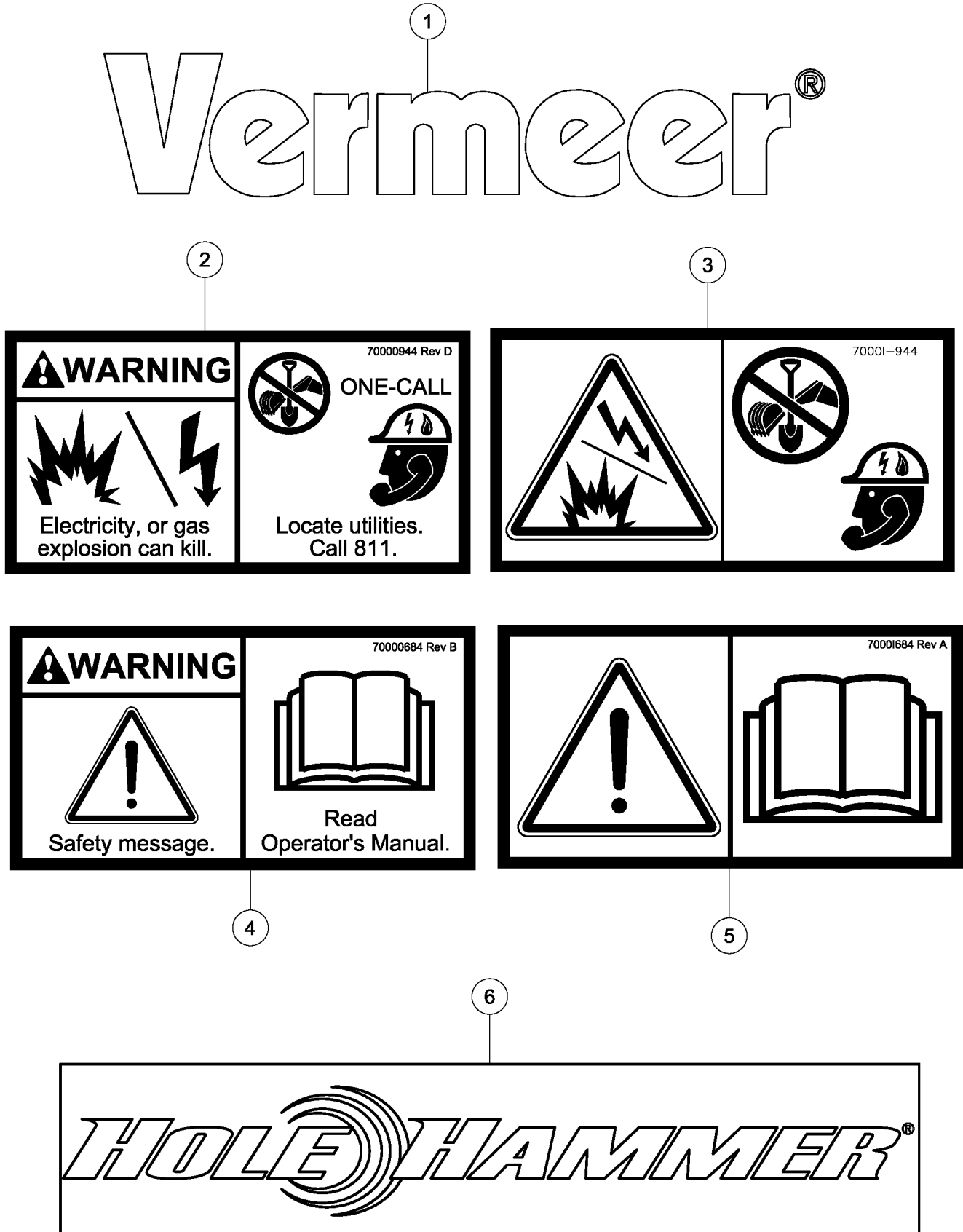
VHH330 3 1/3" Components - Section 6

3 1/3" Quarter-Turn Reverse Pneumatic Piercing Tool Fig 6-1
3 1/3" VHH330 Service Tools Fig 6-2

Oiler Components - Section 7

Oiler..... Fig 7-1

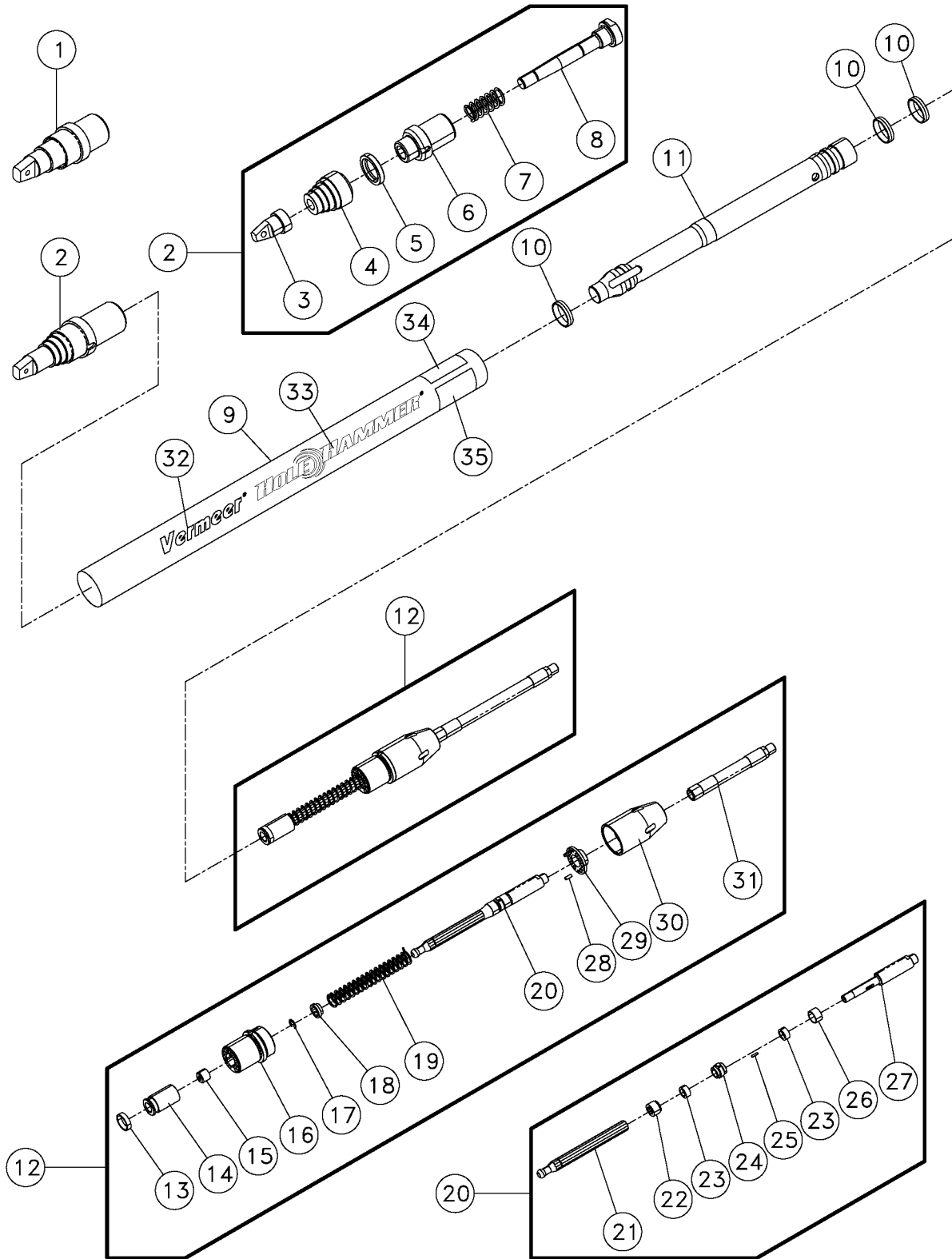
Safety/Cosmetic Fig 1-1



Safety/Cosmetic Fig 1-1

REF. NO.	*	PART NO.	DESCRIPTION	QTY.	REMARKS
1		7000D665	DECAL-1.75" YELLOW VERMEER LABEL	1	
2		70000944	DECAL-WARNING UND MOLES	1	Domestic
3		7000I944	DECAL-WARNING (UG)	1	International
4		70000684	DECAL-WARNING	1	Domestic
5		7000I684	DECAL-WARNING	1	International
6		296379350	DECAL - HOLE HAMMER	1	

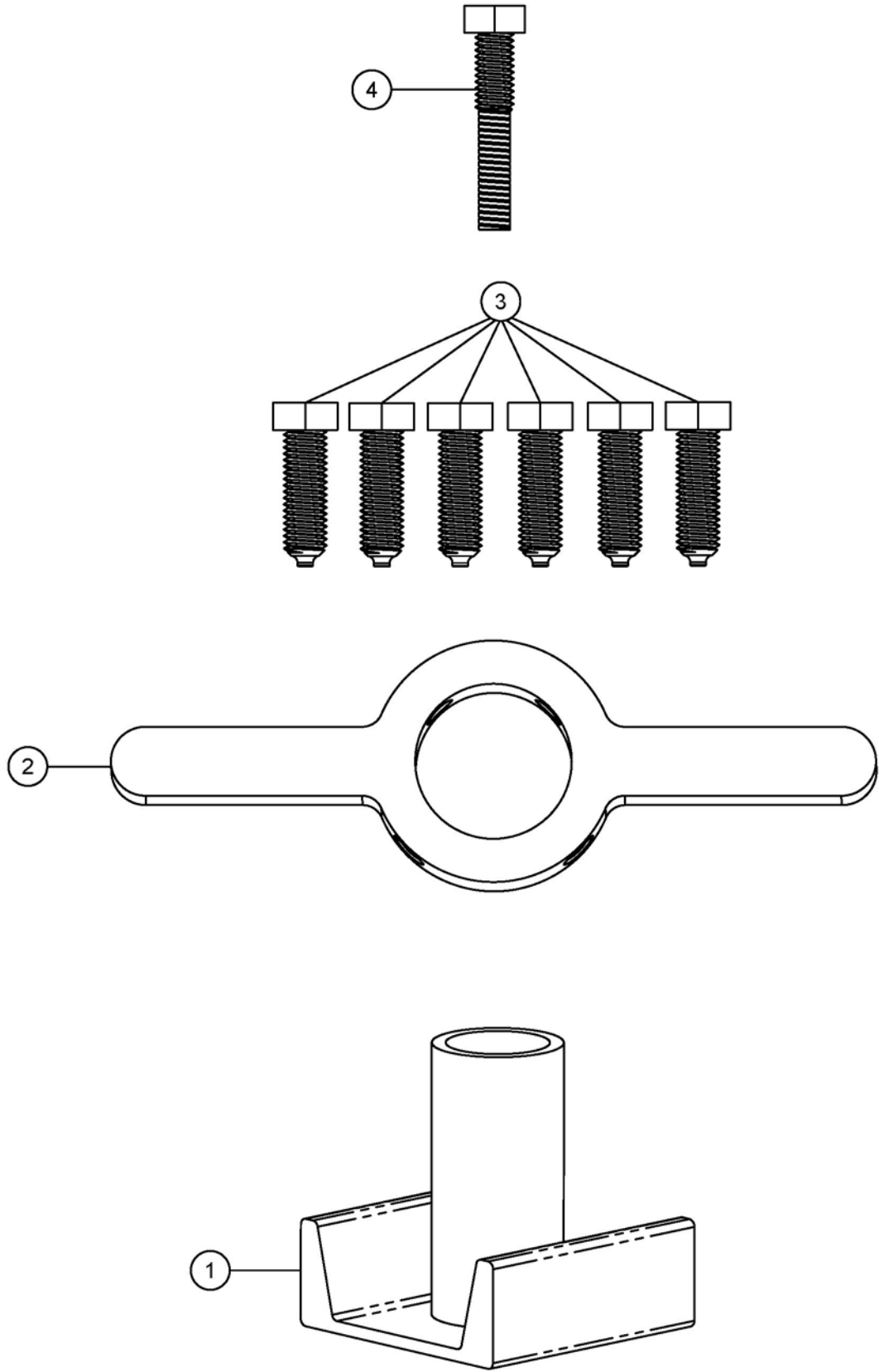
1.8" Quarter-Turn Reverse Pneumatic Piercing Tool Fig 2-1



1.8" Quarter-Turn Reverse Pneumatic Piercing Tool Fig 2-1

REF. NO.	*	PART NO.	DESCRIPTION	QTY.	REMARKS
1		296379272	REPLACEABLE HEAD	1	
2		296379271	ROCK HEAD ASSEMBLY	1	Includes Items 3 Thru 8
3		296379278	BIT SHAFT LOCK NUT	1	
4		296379277	STEPPED HEAD	1	
5		296379276	HEAD SEAL	1	
6		296379275	FRONT ANVIL	1	
7		296379274	HEAD SPRING	1	
8		296379273	BIT SHAFT	1	
9		296379279	BODY TUBE	1	
10		296379281	STRIKER RING	3	3 Required
11		296379430	STRIKER	1	
12		296379395	REVERSE MECHANISM ASSEMBLY	1	Includes Items 13 Thru 31
13		296379294	VALVE RING	1	
14		296379431	VALVE	1	
15		296379292	VALVE BUSHING	1	
16		296379291	REAR ANVIL	1	
17		296379290	E-CLIP	1	
18		296379289	SPRING RETAINER	1	
19		296379288	VALVE CONTROL SPRING	1	
20		296379287	CONTROL STEM ASSEMBLY	1	Includes Items 21 Thru 27
21		296379301	FRONT CONTROL STEM	1	
22		296379300	FRONT BUSHING CUP	1	
23		296379298	BUSHING (2 REQUIRED)	2	2 Required
24		296379299	CONTROL CAM	1	
25		296379296	DOWEL PIN CONTROL STEM	1	
26		296379297	REAR BUSHING CUP	1	
27		296379295	REAR CONTROL STEM	1	
28		296379286	DOWEL PIN REAR ANVIL	2	2 Required
29		296379285	INTERMEDIATE SPACER	1	
30		296379284	TAIL CONE	1	
31		296264831	SERVICEABLE REAR HOSE WHIP	1	
32		7000D665	DECAL - 1.75" YELLOW VERMEER	1	
33		296379350	DECAL - HOLE HAMMER	1	
34		70000684	DECAL-WARNING	1	Domestic
34		7000I684	DECAL-WARNING	1	International
35		70000944	DECAL-WARNING UND MOLES	1	Domestic
35		7000I944	DECAL-WARNING	1	International
		296379407	CAM, CUPS & BUSHING KIT		Includes Items 22 Thru 26

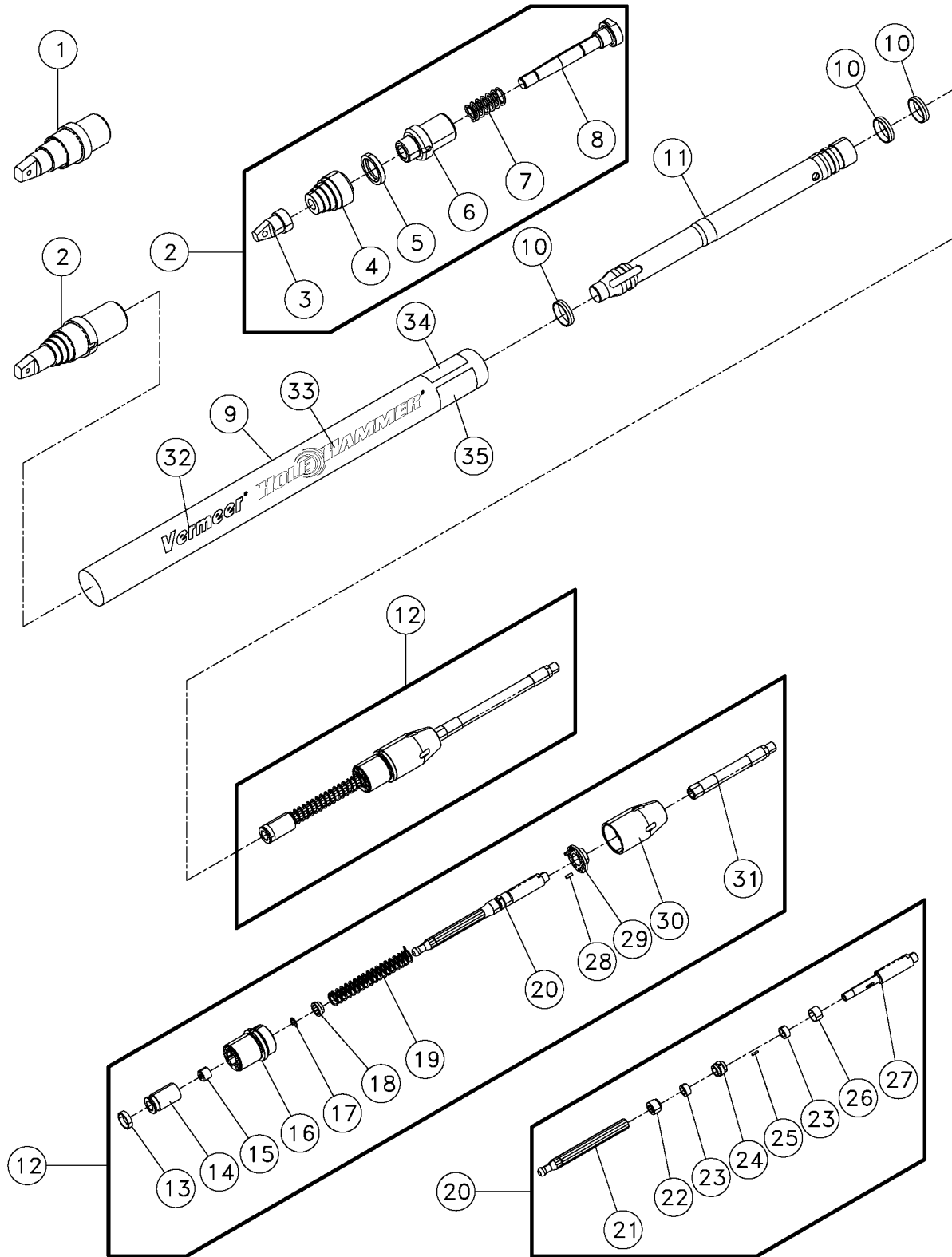
1.8" VHH180 Service Tools Fig 2-2



1.8" VHH180 Service Tools Fig 2-2

REF. NO.	*	PART NO.	DESCRIPTION	QTY.	REMARKS
1		296379413	ROCK HEAD FACTORY PRESS FIXTURE 1.8" & 2"	1	
2		296379358	SERVICE WRENCH SMALL 1.8" & 2" TOOLS	1	
3		296379361	SM WRENCH BOLTS 5/8-11X2" GR8	6	
4		296379359	VALVE REMOVAL TOOL 1.8" & 2"	1	
		296379415	1.8" & 2" VHH SERVICE KIT	1	Includes All Items Listed Above

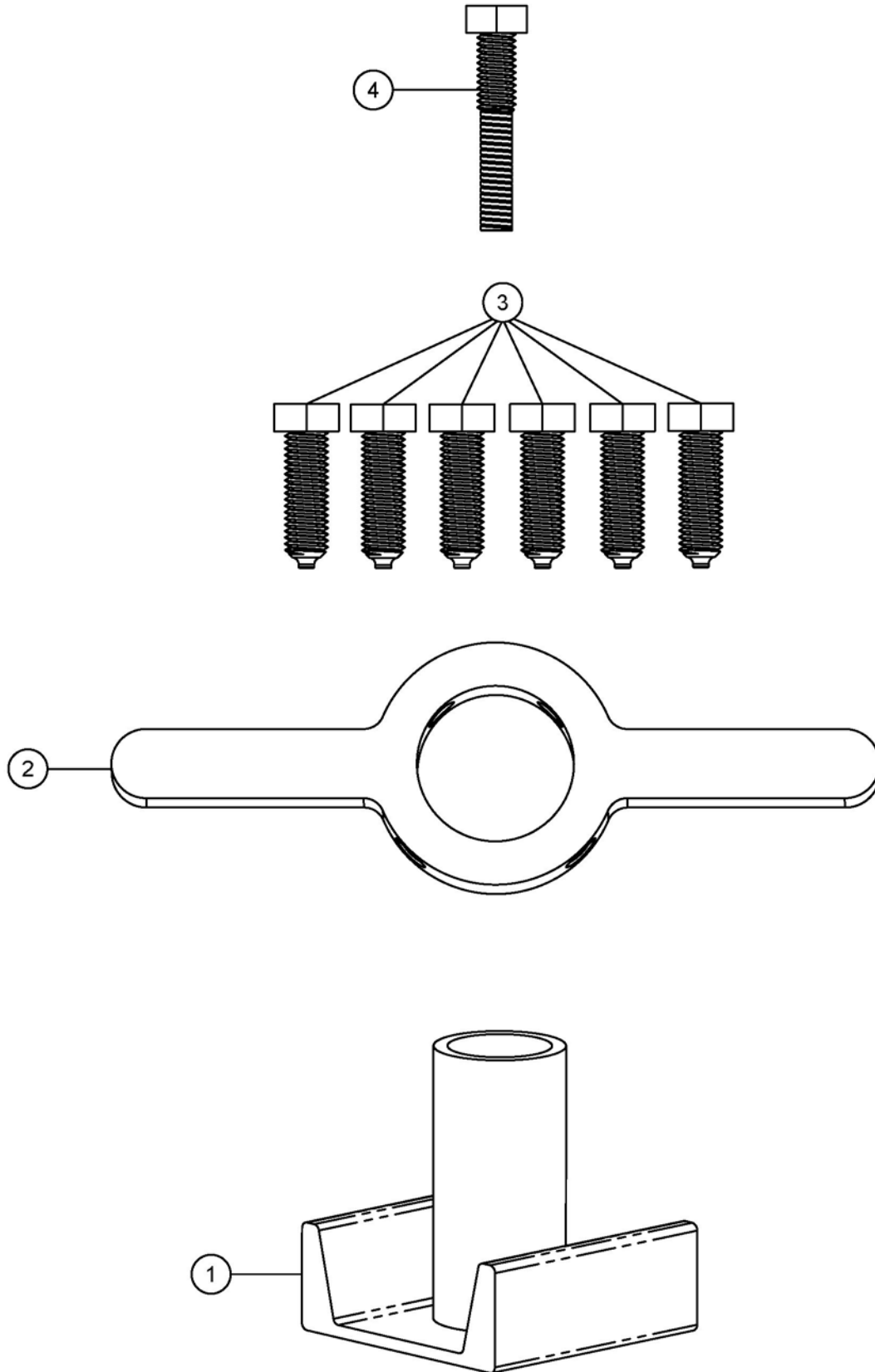
2" Quarter-Turn Reverse Pneumatic Piercing Tool Fig 3-1



2" Quarter-Turn Reverse Pneumatic Piercing Tool Fig 3-1

REF. NO.	*	PART NO.	DESCRIPTION	QTY.	REMARKS
1		296379303	REPLACEABLE HEAD	1	
2		296379302	ROCK HEAD ASSEMBLY	1	Includes Items 3 Thru 8
3		296379309	BIT SHAFT LOCK NUT	1	
4		296379308	STEPPED HEAD	1	
5		296379307	HEAD SEAL	1	
6		296379306	FRONT ANVIL	1	
7		296379305	HEAD SPRING	1	
8		296379304	BIT SHAFT	1	
9		296379310	BODY TUBE	1	
10		296379312	STRIKER RING	3	3 Required
11		296379311	STRIKER	1	
12		296379396	REVERSE MECHANISM ASSEMBLY	1	Includes Items 13 Thru 31
13		296379325	VALVE RING	1	
14		296379324	VALVE	1	
15		296379292	VALVE BUSHING	1	
16		296379322	REAR ANVIL	1	
17		296379290	E-CLIP	1	
18		296379289	SPRING RETAINER	1	
19		296379288	VALVE CONTROL SPRING	1	
20		296379318	CONTROL STEM ASSEMBLY	1	Includes Items 21 Thru 27
21		296379332	FRONT CONTROL STEM	1	
22		296379300	FRONT BUSHING CUP	1	
23		296379298	BUSHING (2 REQUIRED)	2	2 Required
24		296379299	CONTROL CAM	1	
25		296379296	DOWEL PIN CONTROL STEM	1	
26		296379297	REAR BUSHING CUP	1	
27		296379295	REAR CONTROL STEM	1	
28		296379286	DOWEL PIN REAR ANVIL	2	2 Required
29		296379316	INTERMEDIATE SPACER	1	
30		296379315	TAIL CONE	1	
31		296264831	SERVICEABLE REAR HOSE WHIP	1	
32		7000D665	DECAL - 1.75" YELLOW VERMEER	1	
33		296379350	DECAL - HOLE HAMMER	1	
34		70000684	DECAL-WARNING	1	Domestic
34		7000I684	DECAL-WARNING	1	International
35		70000944	DECAL-WARNING UND MOLES	1	Domestic
35		7000I944	DECAL-WARNING	1	International
		296379408	CAM, CUPS & BUSHING KIT		Includes Items 22 Thru 26

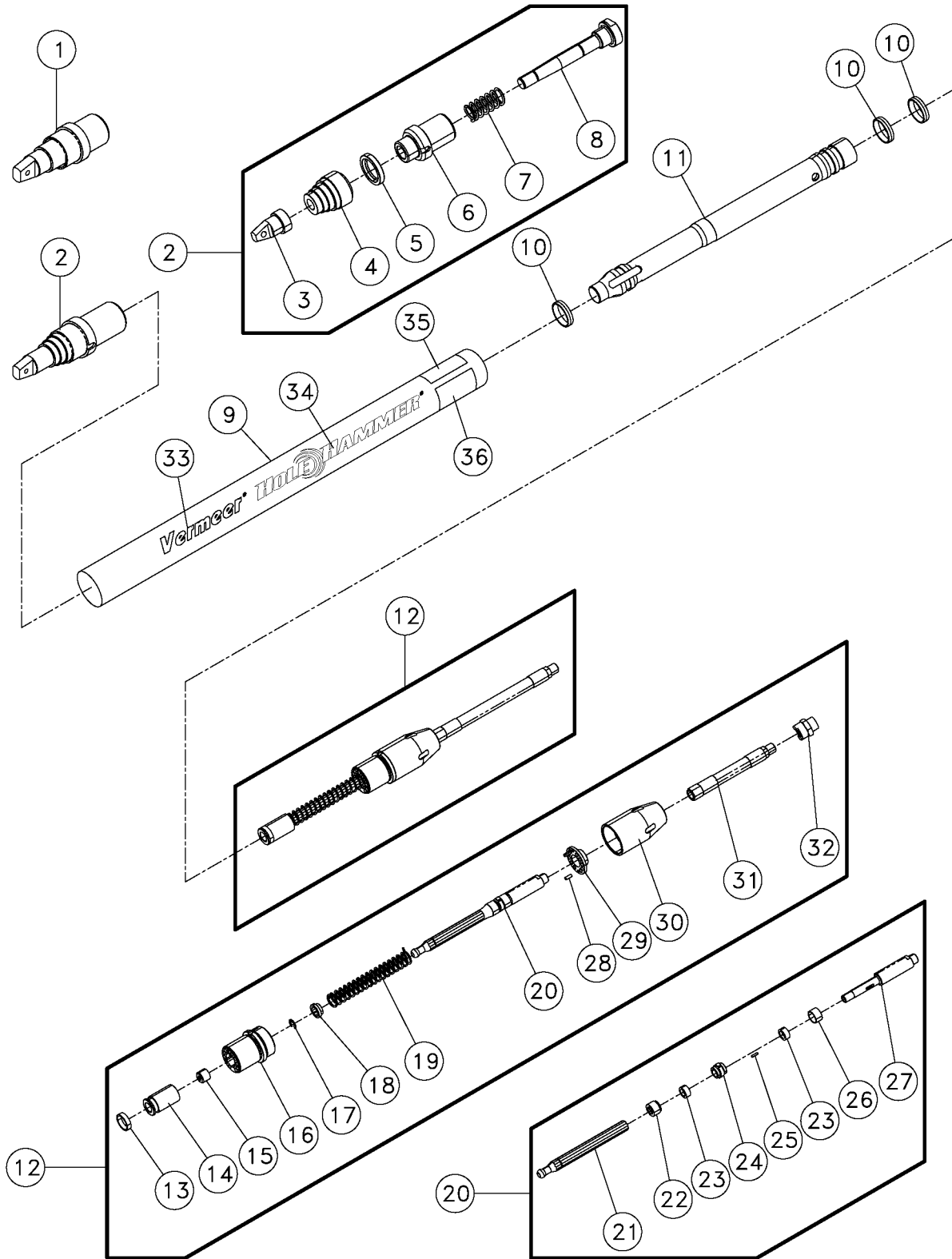
2" VHH200 Service Tools Fig 3-2



2" VHH200 Service Tools Fig 3-2

REF. NO.	*	PART NO.	DESCRIPTION	QTY.	REMARKS
1		296379413	ROCK HEAD FACTORY PRESS FIXTURE 1.8" & 2"	1	
2		296379358	SERVICE WRENCH SMALL 1.8" & 2" TOOLS	1	
3		296379361	SM WRENCH BOLTS 5/8-11X2" GR8	6	
4		296379359	VALVE REMOVAL TOOL 1.8" & 2"	1	
		296379415	1.8" & 2" VHH SERVICE KIT	1	Includes All Items Listed Above

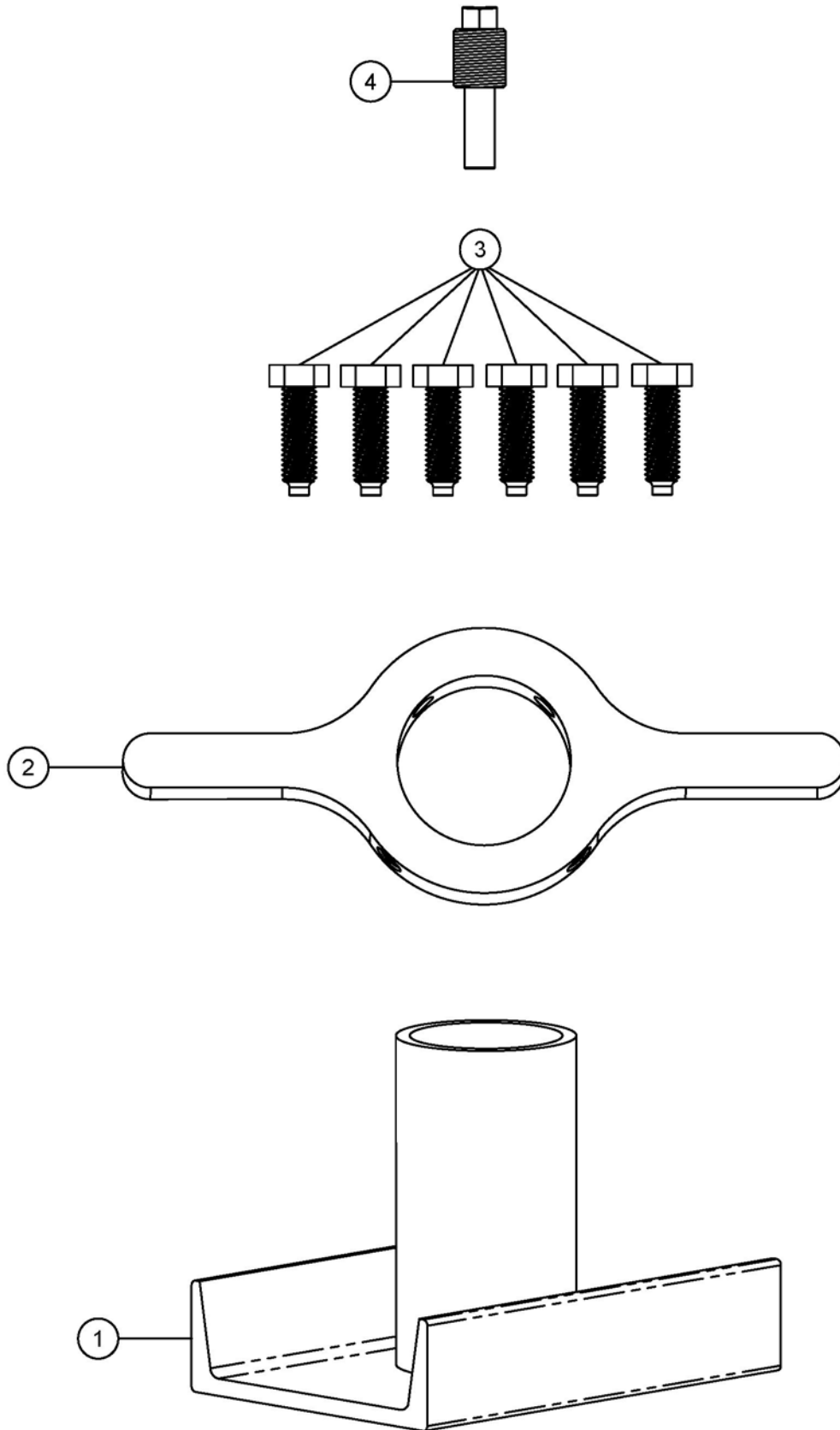
2 1/2" Quarter-Turn Reverse Pneumatic Piercing Tool Fig 4-1



2 1/2" Quarter-Turn Reverse Pneumatic Piercing Tool Fig 4-1

REF. NO.	*	PART NO.	DESCRIPTION	QTY.	REMARKS
1		296379334	REPLACEABLE HEAD	1	
2		296379333	ROCK HEAD ASSEMBLY	1	Includes Items 3 Thru 8
3		296379340	BIT SHAFT LOCK NUT	1	
4		296379339	STEPPED HEAD	1	
5		296379338	HEAD SEAL	1	
6		296379337	FRONT ANVIL	1	
7		296379336	HEAD SPRING	1	
8		296379335	BIT SHAFT	1	
9		296379341	BODY TUBE	1	
10		296379343	STRIKER RING	3	3 Required
11		296379342	STRIKER	1	
12		296379397	REVERSE MECHANISM ASSEMBLY	1	Includes Items 13 Thru 32
13		296379356	VALVE RING	1	
14		296379355	VALVE	1	
15		296379385	VALVE BUSHING	1	
16		296379353	REAR ANVIL	1	
17		296379383	E-CLIP	1	
18		296379382	SPRING RETAINER	1	
19		296379432	VALVE CONTROL SPRING	1	
20		296379349	CONTROL STEM ASSEMBLY	1	Includes Items 21 Thru 27
21		296379363	FRONT CONTROL STEM	1	
22		296379393	FRONT BUSHING CUP	1	
23		296379391	BUSHING (2 REQUIRED)	2	2 Required
24		296379392	CONTROL CAM	1	
25		296379389	DOWEL PIN CONTROL STEM	1	
26		296379390	REAR BUSHING CUP	1	
27		296379388	REAR CONTROL STEM	1	
28		296379286	DOWEL PIN REAR ANVIL	2	2 Required
29		296379347	INTERMEDIATE SPACER	1	
30		296379346	TAIL CONE	1	
31		296379376	SERVICEABLE REAR HOSE WHIP	1	
32		204933023	FITTING-PNEUMATIC	1	
33		7000D665	DECAL - 1.75" YELLOW VERMEER	1	
34		296379350	DECAL - HOLE HAMMER	1	
35		70000684	DECAL-WARNING	1	Domestic
35		7000I684	DECAL-WARNING	1	International
36		70000944	DECAL-WARNING UND MOLES	1	Domestic
36		7000I944	DECAL-WARNING	1	International
		296379410	CAM, CUPS, & BUSHING KIT		Includes Items 22 Thru 26

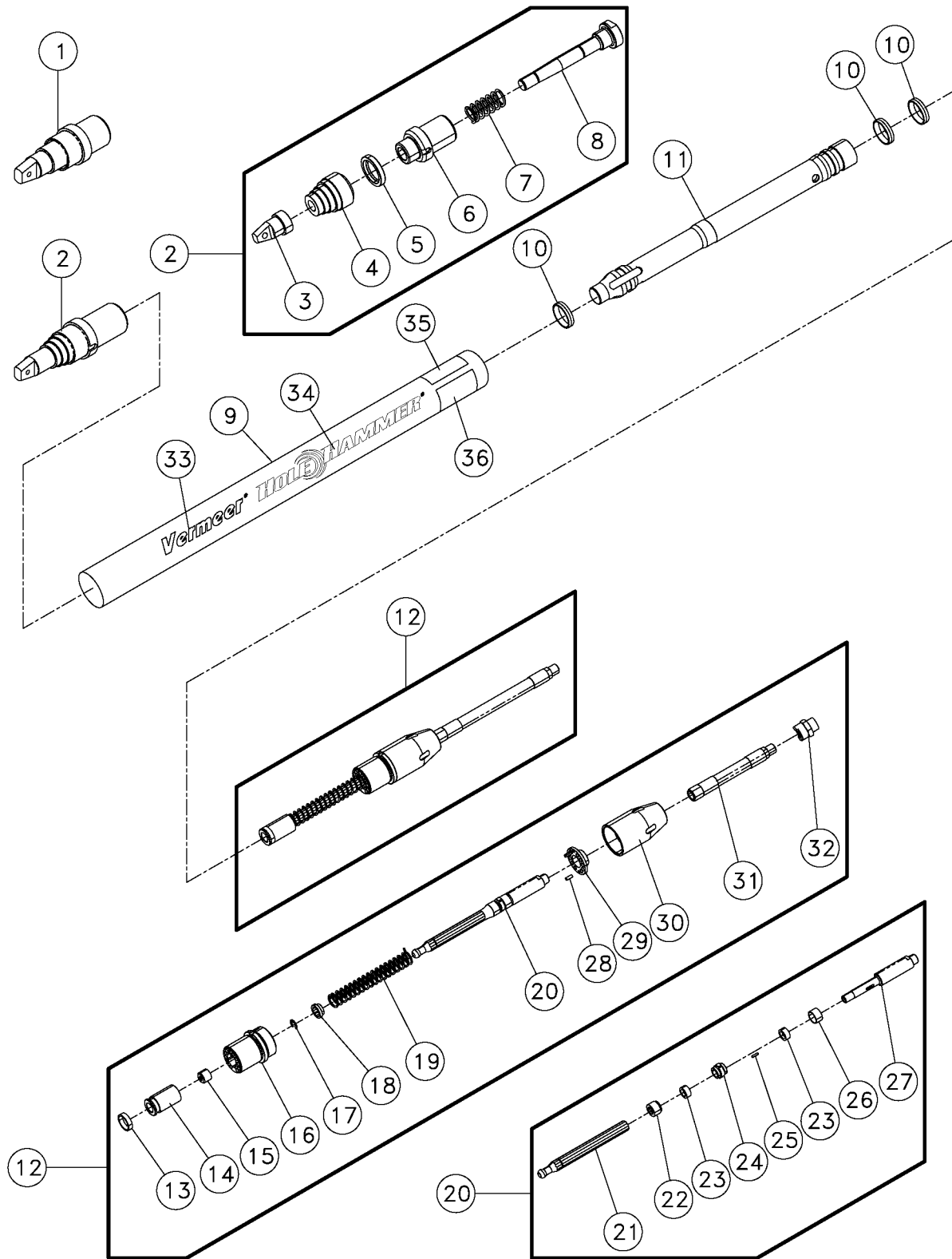
2 1/2" VHH250 Service Tools Fig 4-2



2 1/2" VHH250 Service Tools Fig 4-2

REF. NO.	*	PART NO.	DESCRIPTION	QTY.	REMARKS
1		296379414	2.5", 3" & 3.3" QT ROCK HEAD FACTORY PRESS FIXTURE	1	
2		296379345	WRENCH 2.5", 3" & 3.3" QT TOOLS	1	
3		296379351	LG WRENCH BOLT 5/8-11X2" GR8	6	
4		296379362	2.5" QT VALVE REMOVAL TOOL	1	
		296379416	2.5", 3" & 3.3" VHH SERVICE KIT	1	Includes All Items Listed Above

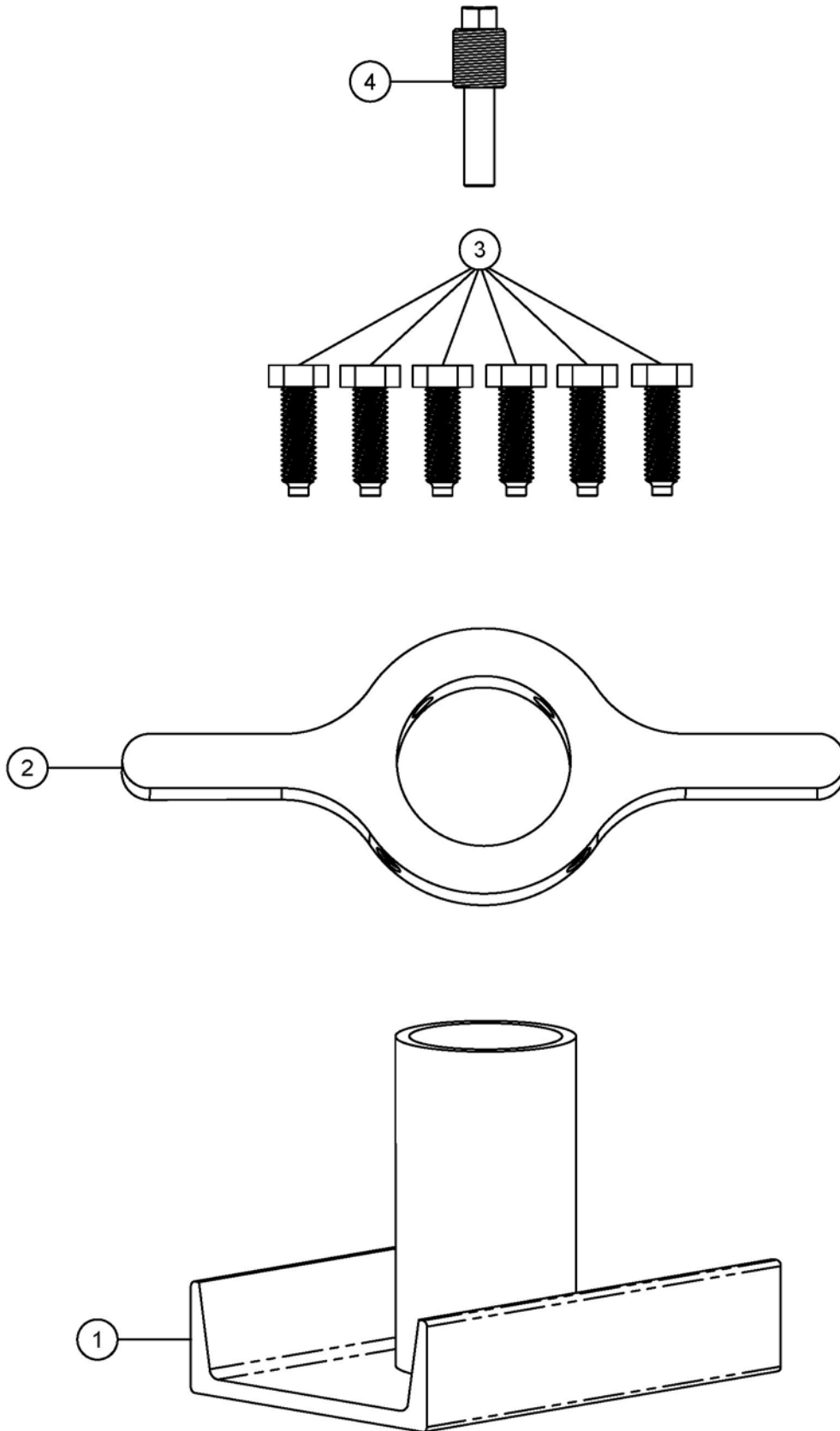
3" Quarter-Turn Reverse Pneumatic Piercing Tool Fig 5-1



3" Quarter-Turn Reverse Pneumatic Piercing Tool Fig 5-1

REF. NO.	*	PART NO.	DESCRIPTION	QTY.	REMARKS
1		296379365	REPLACEABLE HEAD	1	
2		296379364	ROCK HEAD ASSEMBLY	1	Includes Items 3 thru 8
3		296379371	BIT SHAFT LOCK NUT	1	
4		296379370	STEPPED HEAD	1	
5		296379369	HEAD SEAL	1	
6		296379368	FRONT ANVIL	1	
7		296379367	HEAD SPRING	1	
8		296379366	BIT SHAFT	1	
9		296379372	BODY TUBE 3" STD	1	
10		296379374	STRIKER RING	3	Requires 3
11		296379373	STRIKER	1	
12		296379398	REVERSE MECHANISM ASSEMBLY	1	Includes Items 13 thru 32
13		296379387	VALVE RING	1	
14		296379386	VALVE	1	
15		296379385	VALVE BUSHING	1	
16		296379384	REAR ANVIL	1	
17		296379383	E-CLIP	1	
18		296379382	SPRING RETAINER	1	
19		296379381	VALVE CONTROL SPRING	1	
20		296379380	CONTROL STEM ASSEMBLY	1	Includes Items 21 Thru 27
21		296379394	FRONT CONTROL STEM	1	
22		296379393	FRONT BUSHING CUP	1	
23		296379391	BUSHING (2 REQUIRED)	2	
24		296379392	CONTROL CAM	1	
25		296379389	DOWEL PIN CONTROL STEM	1	
26		296379390	REAR BUSHING CUP	1	
27		296379388	REAR CONTROL STEM	1	
28		296379379	DOWEL PIN REAR ANVIL	2	Requires 2
29		296379378	INTERMEDIATE SPACER	1	
30		296379377	TAIL CONE	1	
31		296379376	SERVICEABLE REAR HOSE WHIP	1	
32		204933023	FITTING - PNEUMATIC	1	
33		7000D665	DECAL - 1.75" YELLOW VERMEER	1	
34		296379350	DECAL - HOLE HAMMER	1	
35		70000684	DECAL-WARNING	1	Domestic
35		7000I684	DECAL-WARNING	1	International
36		70000944	DECAL-WARNING UND MOLES	1	Domestic
36		7000I944	DECAL-WARNING	1	International
		296379410	CAM, CUPS & BUSHING KIT		Includes Items 22 Thru 26

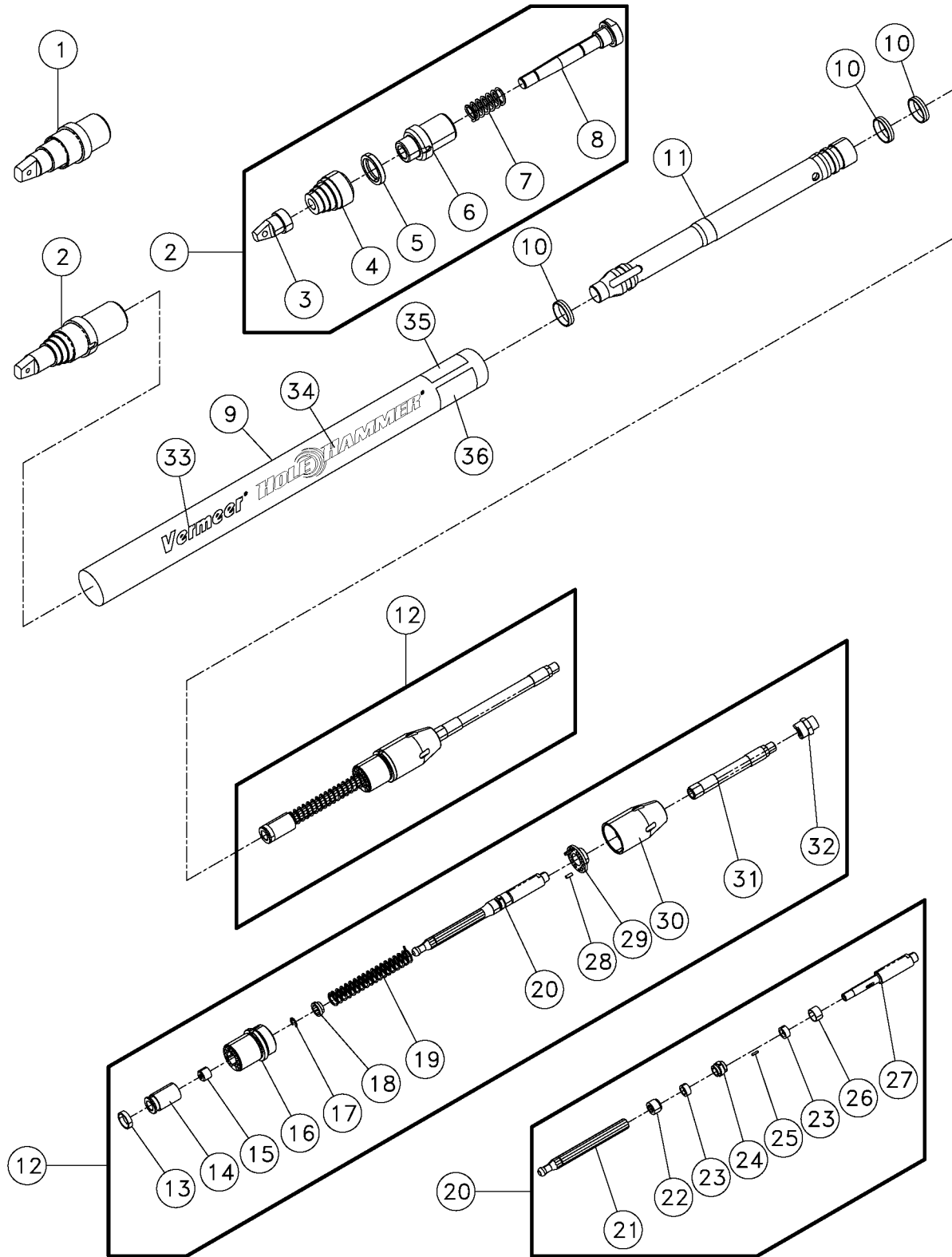
3" VHH300 Service Tools Fig 5-2



3" VHH300 Service Tools Fig 5-2

REF. NO.	*	PART NO.	DESCRIPTION	QTY.	REMARKS
1		296379414	2.5", 3" & 3.3" QT ROCK HEAD FACTORY PRESS FIXTURE	1	
2		296379345	WRENCH 2.5", 3" & 3.3" QT TOOLS	1	
3		296379351	LG WRENCH BOLT 5/8-11X2" GR8	6	
4		296379360	3" & 3.3" QT VALVE REMOVAL TOOL	1	
		296379416	2.5", 3" & 3.3" VHH SERVICE KIT	1	Includes All Items Listed Above

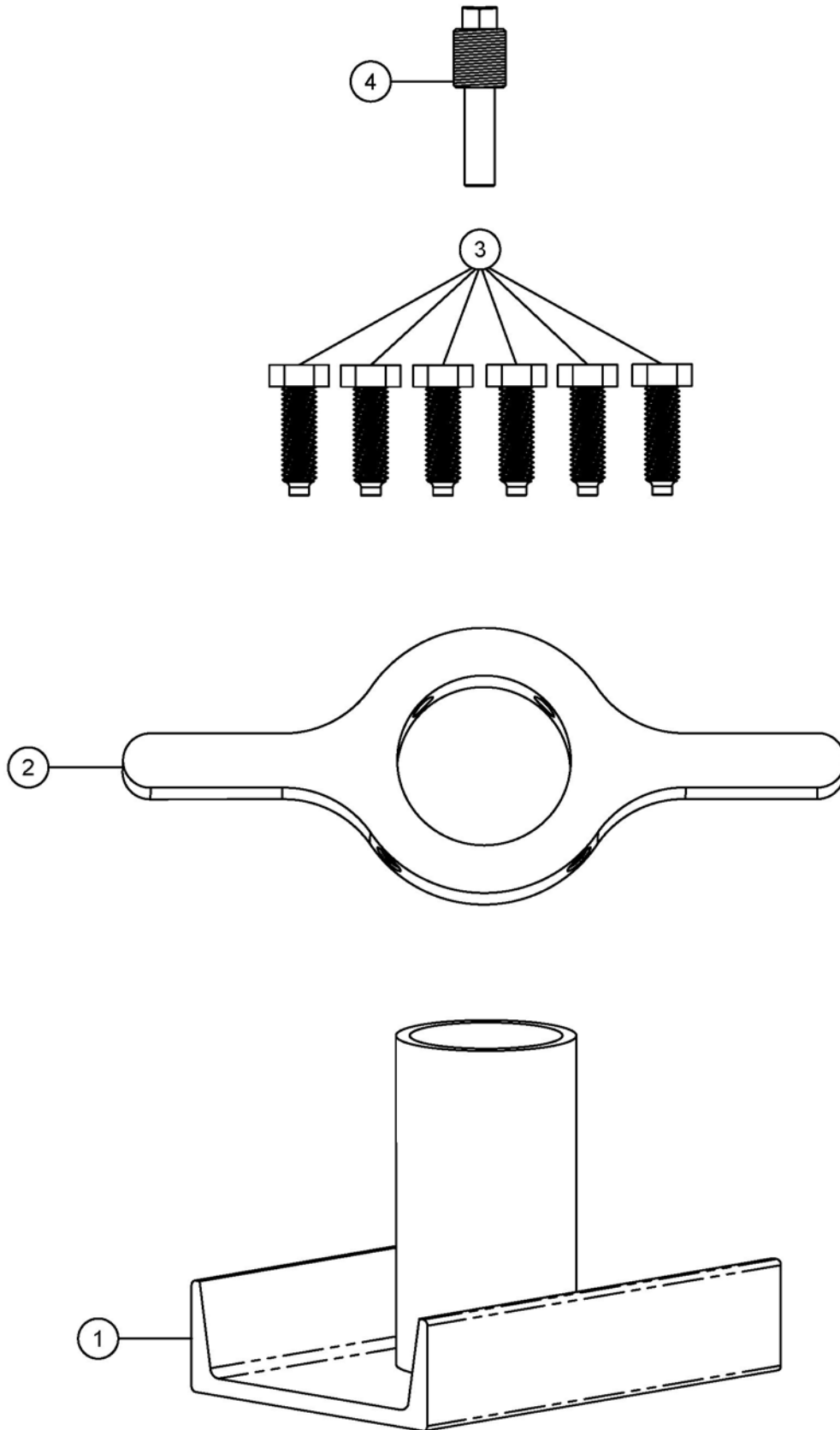
3 1/3" Quarter-Turn Reverse Pneumatic Piercing Tool Fig 6-1



3 1/3" Quarter-Turn Reverse Pneumatic Piercing Tool Fig 6-1

REF. NO.	*	PART NO.	DESCRIPTION	QTY.	REMARKS
1		296379365	REPLACEABLE HEAD	1	
2		296379364	ROCK HEAD ASSEMBLY	1	Includes Items 3 thru 8
3		296379371	BIT SHAFT LOCK NUT	1	
4		296379370	STEPPED HEAD	1	
5		296379369	HEAD SEAL	1	
6		296379368	FRONT ANVIL	1	
7		296379367	HEAD SPRING	1	
8		296379366	BIT SHAFT	1	
9		296379435	BODY TUBE 3.3"	1	
10		296379374	STRIKER RING	3	Requires 3
11		296379373	STRIKER	1	
12		296379398	REVERSE MECHANISM ASSEMBLY	1	Includes Items 13 thru 32
13		296379387	VALVE RING	1	
14		296379386	VALVE	1	
15		296379385	VALVE BUSHING	1	
16		296379384	REAR ANVIL	1	
17		296379383	E-CLIP	1	
18		296379382	SPRING RETAINER	1	
19		296379381	VALVE CONTROL SPRING	1	
20		296379380	CONTROL STEM ASSEMBLY	1	Includes Items 21 Thru 27
21		296379394	FRONT CONTROL STEM	1	
22		296379393	FRONT BUSHING CUP	1	
23		296379391	BUSHING (2 REQUIRED)	2	
24		296379392	CONTROL CAM	1	
25		296379389	DOWEL PIN CONTROL STEM	1	
26		296379390	REAR BUSHING CUP	1	
27		296379388	REAR CONTROL STEM	1	
28		296379379	DOWEL PIN REAR ANVIL	2	Requires 2
29		296379378	INTERMEDIATE SPACER	1	
30		296379377	TAIL CONE	1	
31		296379376	SERVICEABLE REAR HOSE WHIP	1	
32		204933023	FITTING - PNEUMATIC	1	
33		7000D665	DECAL - 1.75" YELLOW VERMEER	1	
34		296379350	DECAL - HOLE HAMMER	1	
35		70000684	DECAL-WARNING	1	Domestic
35		7000I684	DECAL-WARNING	1	International
36		70000944	DECAL-WARNING UND MOLES	1	Domestic
36		7000I944	DECAL-WARNING	1	International
		296379410	CAM, CUPS & BUSHING KIT		Includes Items 22 Thru 26

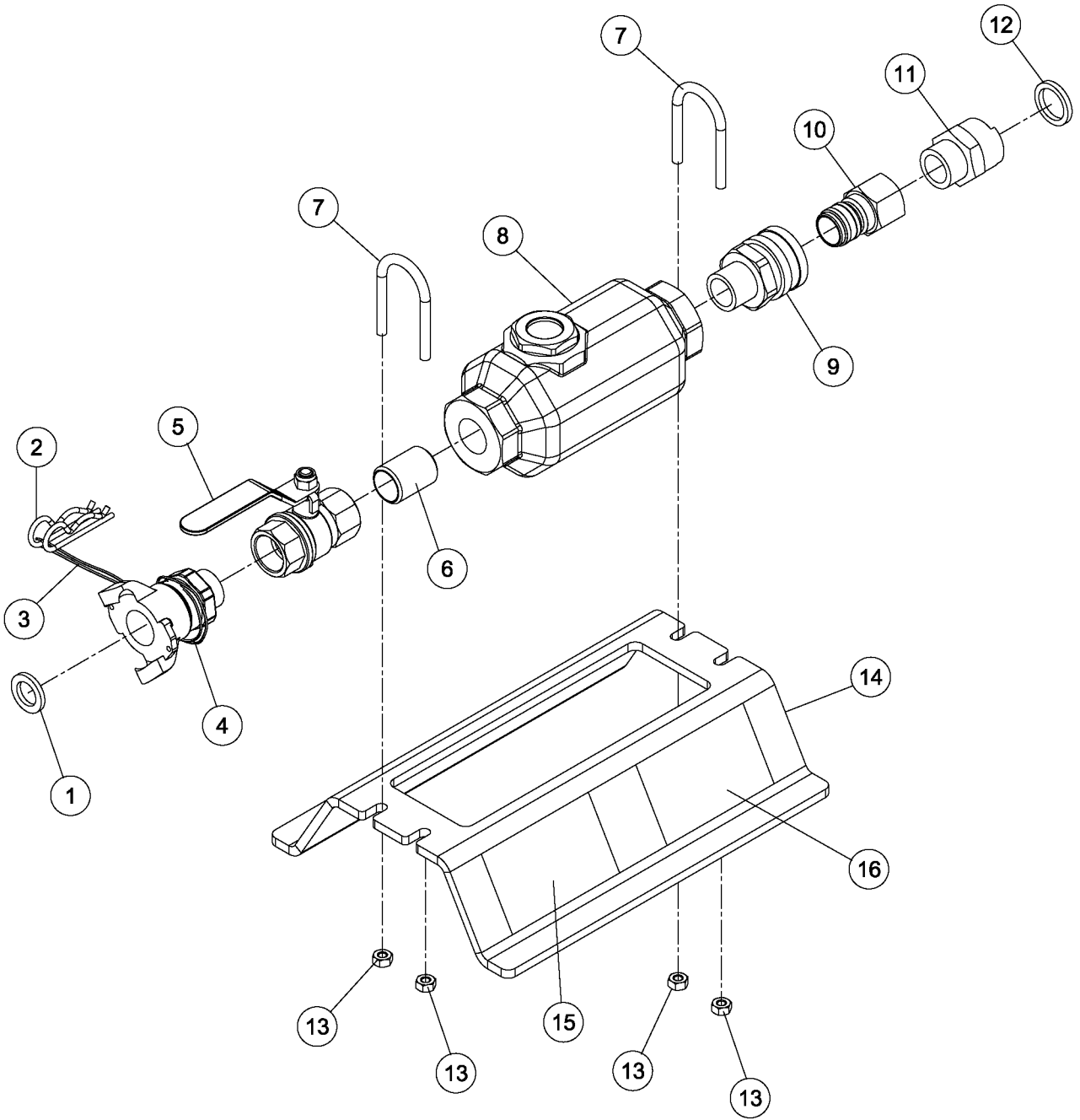
3 1/3" VHH330 Service Tools Fig 6-2



3 1/3" VHH330 Service Tools Fig 6-2

REF. NO.	*	PART NO.	DESCRIPTION	QTY.	REMARKS
1		296379414	2.5", 3" & 3.3" QT ROCK HEAD FACTORY PRESS FIXTURE	1	
2		296379345	WRENCH 2.5", 3" & 3.3" QT TOOLS	1	
3		296379351	LG WRENCH BOLT 5/8-11X2" GR8	6	
4		296379360	3" & 3.3" QT VALVE REMOVAL TOOL	1	
		296379416	2.5", 3" & 3.3" VHH SERVICE KIT	1	Includes All Items Listed Above

Oiler Fig 7-1



Oiler Fig 7-1

REF. NO.	*	PART NO.	DESCRIPTION	QTY.	REMARKS
1		205154005	FITTING GASKET	1	
2		205154007	SAFETY CLIP	2	
3		296379260	STRING-POLY 1 16X27	1	
4		205154003	FITTING-CLAW FITTING-MALE	1	
5		3379001	VALVE - 3/4in BALL - 101R NPT	1	
6		736007	NIPPLE-3/4" CLOSE BLACK STEEL	1	
7		296386421	U - BOLT-1/4-20 2.25 TALL	2	
8		296379258	OILER (3/4" FNPT PORTS)	1	
		208567001	OILER VALVE W/O-RING	1	
9		213827001	FEMALE SOCKET/QUICK REV.KIT	1	
10		213826001	MALE PLUG/QUICK REV.KIT	1	
11		205154011	PNEUMATIC FITTING	1	
12		241107001	O-RING	1	
13		103201001	NUT-1/4-20NC NYLON INSERT LOCK	4	
14		296379259	OILER BRACKET	1	
15		70000944	DECAL-WARNING UND MOLES	1	Domestic
15		7000I944	DECAL-WARNING	1	International
16		70000684	DECAL-WARNING	1	Domestic
16		7000I684	DECAL-WARNING	1	International

NOTES: _____

No part of this manual may be reproduced in any form or by any means, electronic or mechanical, including photocopying, recording, or by any information storage and retrieval systems, without the express written consent of Vermeer Corporation.

Copyright 2014 McLaughlin Group, Inc.
All rights reserved.
McLaughlin Group, Inc.
2006 Perimeter Rd.
Greenville, SC 29605, USA