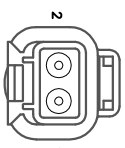


Stamp	Supplier part number	Col.	Length	Strp 1	Term 1	From Connector	Pos.	Strp 2	Term 2	To Connector	Pos.	M/C
143	6TXL-1601-1	BRN	127	0.2	1060-16-0122	C1	4	5.6	12015869	C2	4	
144	6TXL-1601-2	RED	127	0.2	1060-16-0122	C1	10	5.6	12015869	C3	4	
145B	6GXL-1601-2	RED	127	0.2	1060-16-1222	SWITCHBOX2	2	5.6	12015870	C4	2	
145C	6TXL-1601-2	RED	127	0.2	1060-16-0122	C1	8	5.6	12015869	C3	2	
145D	6TXL-1601-2	RED	127	0.2	1060-16-0122	C1	11	5.6	12015869	C3	5	
145E	6TXL-1601-2	RED	127	0.2	1060-16-0122	C1	2	5.6	12015869	C2	2	
145F	6TXL-1601-2	RED	127	0.2	1060-16-0122	C1	5	5.6	12015869	C2	5	
151A	6TXL-1601-1	BRN	127	0.2	1060-16-0122	C1	1	5.6	12015869	C2	1	
151B	6TXL-1601-1	BRN	127	0.2	1060-16-0122	C1	3	5.6	12015869	C2	3	
151C	6TXL-1601-1	BRN	127	0.2	1060-16-0122	C1	7	5.6	12015869	C3	1	
151D	6TXL-1601-1	BRN	127	0.2	1060-16-0122	C1	9	5.6	12015869	C3	3	
199A	6GXL-1601-1	BRN	127	0.2	1060-16-1222	SWITCHBOX2	1	5.6	12015870	C4	1	
300B	6TXL-1601-D5	GRN	127	0.2	1060-16-0122	C1	6	5.6	12015869	C2	6	
301	6TXL-1601-7	W/O	127	0.2	1060-16-0122	C1	12	5.6	12015869	C3	6	



Cav No.	CSA Col.	Type	Supplier part Num&Qty.
1	199A	1.31 BRN GXL	W2P
2	145B	1.31 RED GXL	1

Cav No.	CSA Col.	Type	Supplier part Num&Qty.
1	199A	1.31 BRN GXL	W2P
2	145B	1.31 RED GXL	1

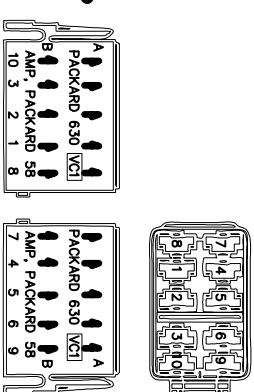
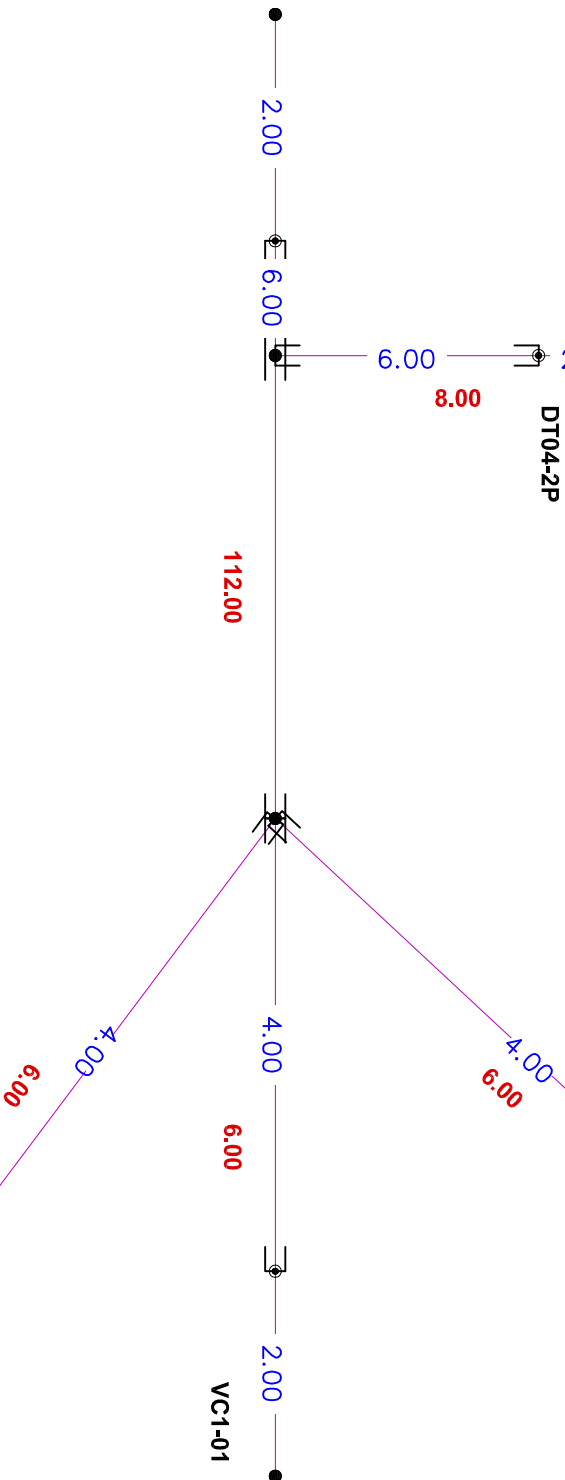
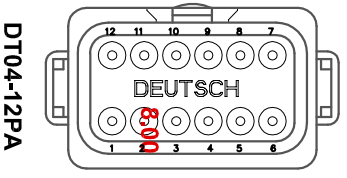
Cav No.	CSA Col.	Type
1	151A	1.31 BRN TXL
2	145E	1.31 RED TXL
3	151B	1.31 BRN TXL
4	143	1.31 BRN TXL
5	145F	1.31 RED TXL
6	300B	1.31 GRN TXL
7	-	-
8	-	-
9	-	-
10	-	-

Cav No.	CSA Col.	Type
1	199A	1.31 BRN GXL
2	145B	1.31 RED GXL
3	-	-
4	-	-
5	-	-
6	-	-
7	-	-
8	-	-
9	-	-
10	-	-

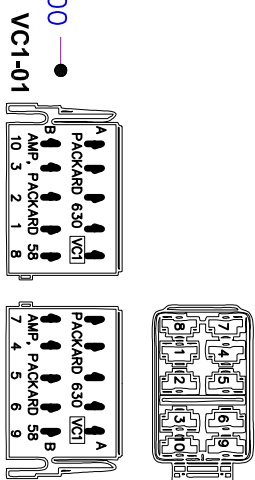
Cav No.	CSA Col.	Type
1	151C	1.31 BRN TXL
2	145C	1.31 RED TXL
3	151D	1.31 BRN TXL
4	144	1.31 RED TXL
5	145D	1.31 RED TXL
6	301	1.31 W/O TXL
7	-	-
8	-	-
9	-	-
10	-	-

Cav No.	CSA Col.	Type
1	151A	1.31 BRN TXL
2	145E	1.31 RED TXL
3	151B	1.31 BRN TXL
4	143	1.31 BRN TXL
5	145F	1.31 RED TXL
6	300B	1.31 GRN TXL
7	151C	1.31 BRN TXL
8	145C	1.31 RED TXL
9	151D	1.31 BRN TXL
10	144	1.31 RED TXL
11	145D	1.31 RED TXL
12	301	1.31 W/O TXL

Supplier part Num&Qty.
W12P 1



CARLING TECHNOLOGIES
V-SERIES CONTURA SWITCH
VC1 CONNECTOR HOUSING



CARLING TECHNOLOGIES
V-SERIES CONTURA SWITCH
VC1 CONNECTOR HOUSING

Cav No.	CSA Col.	Type
1	151C	1.31 BRN TXL
2	145C	1.31 RED TXL
3	151D	1.31 BRN TXL
4	144	1.31 RED TXL
5	145D	1.31 RED TXL
6	301	1.31 W/O TXL
7	-	-
8	-	-
9	-	-
10	-	-

- NOTES:
- USE SAFE J1128 GXL, TXL OR SYL WIRE
 - SECURE ALL BREAKOUTS AND JUNCTION WITH TAPE 3 WRAPS MINIMUM
 - LABEL HARNESS WITH THE MANUFACTURER IDENTIFICATION, BUILD DATE AND PART NUMBER.
 - USE APPROVED WIRE BUNDLING OR EQUIVALENT
 - ALL HARNESS WIRE BUNDLES UNLESS OTHERWISE NOTED ON DRAWINGS.
 - SOLID LINES DENOTE BRAIDING
 - DASH LINES DENOTE NO BRAID
 - INSTALL CAVITY PLUGS ON ALL OPEN CAVITIES IF AVAILABLE.
 - KNICKET OR HOT STAMP WIRE EVERY 2 INCHES OTHER WIRE STATED ON DRAWING.
 - ALL WIRES LARGER THEN 10AWG SHOULD BE SPOT SOLDERED OR DIPPEP.
 - ANY DEVIATION MUST BE SUBMITTED BY AND APPROVED BY EMAIL.
 - DIMENSION ARE IN INCHES.
 - WIRE DIMENSIONS ARE TO WIRE ENDS. HARNESS DIMENSIONS ARE TO END OF COVERING, BETWEEN DIMENSIONS ARE TO END OF COVERING, BETWEEN DIMENSIONS ARE TO END OF COVERING, BETWEEN DIMENSIONS ARE TO END OF COVERING, BETWEEN
 - SEE WIRE LIST FOR CIRCUIT DETAILS.

DATE	REVISION	DESCRIPTION OF CHANGE
	B	ADDED C4 SWITCHBOX 2

Owner	
McLaughlin Group	
Title	Boom Switch
Box Hrs	
Drawn By	X200132
Checked By	
1 OF 1	CPE
Drawn By	
Checked By	
DATE	
PAGE	

This Drawing and its contents contain confidential and proprietary information of its owner and should not be used or disclosed as authorized by owner.