



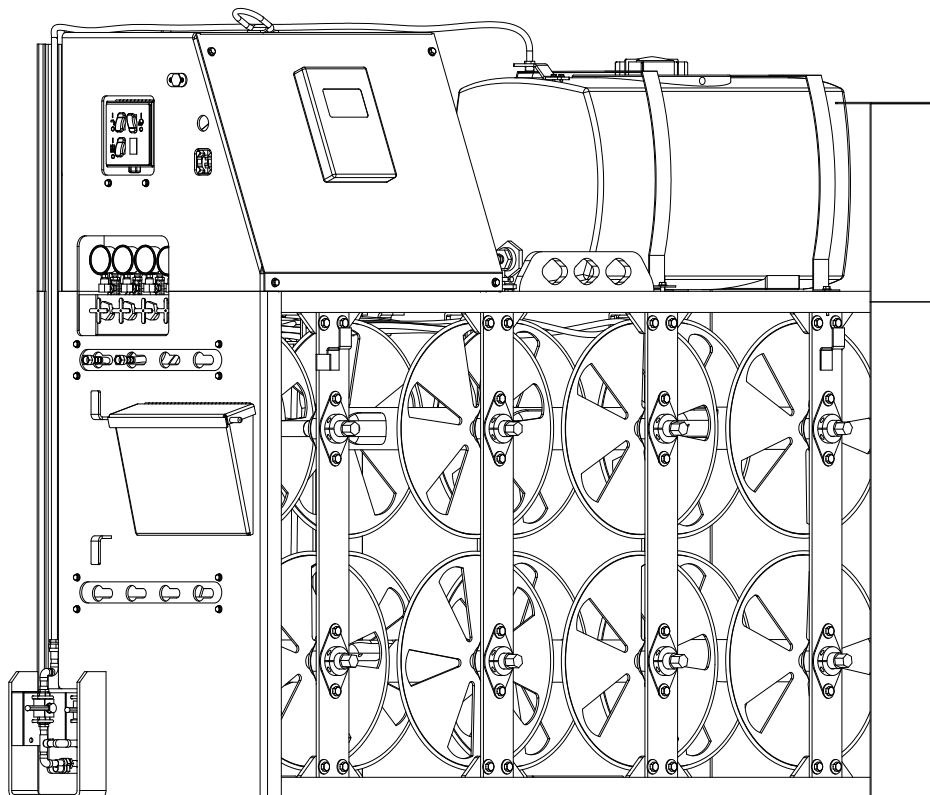
COMPONENTS AND REPAIR MANUAL

2006 Perimeter Rd. Greenville, SC 29605
Toll Free: 800-435-9340 - Phone: 864-277-5870
Fax: 864-235-9661 - www.mightymole.com
email: mmole@mightymole.com

**MODEL
CONTROL STATION**

MACHINE SERIAL NO.:
OTSCS200006 - OTSCS200034

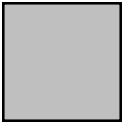
MANUAL PART NO.: E851101



Machine Serial # _____

Purchased &
Serviced Thru: _____

Purchase Date: _____



WARNING: Battery posts, terminals and related accessories contain lead and lead compounds, chemicals known to the State of California to cause cancer and birth defects or other reproductive harm. **Wash hands after handling.**

TABLE OF CONTENTS

CONTROL STATION

<u>DESCRIPTION</u>	<u>PAGE</u>
Decal Placement	5
Machine Assemblies, Parts Details	
Control Station	6
PowerPack.....	8
Control Box	10
Water Tank	12
Wiring Schematics	15
Hydraulic Pump Manual	17

PAGE LEFT BLANK



WARNING

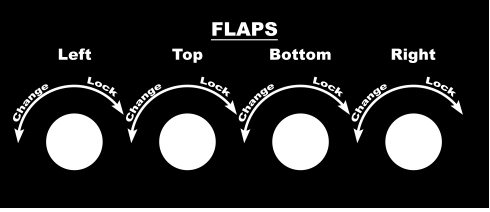
HIGH-PRESSURE FLUID HAZARD

To prevent serious injury or death:

- Relieve pressure on system before repairing or adjusting or disconnecting.
- Wear proper hand and eye protection when searching for leaks. Use wood or cardboard instead of hands.
- Keep all components in good repair.

©Clarion Safety Systems, LLC clarionsafety.com 10080 No. C5539-01

C5539-01



J200518



WARNING

Read manual.
Death or serious injury may result.
Read and understand
all safety and operating instructions
BEFORE operating any equipment.

J200420

J200420



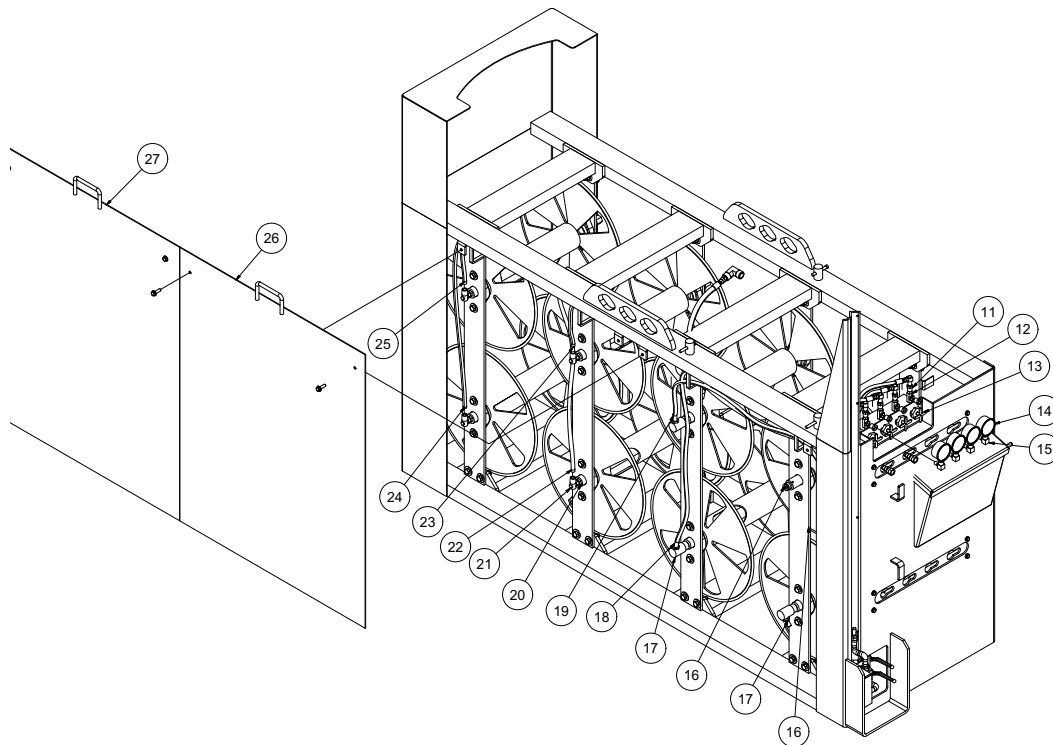
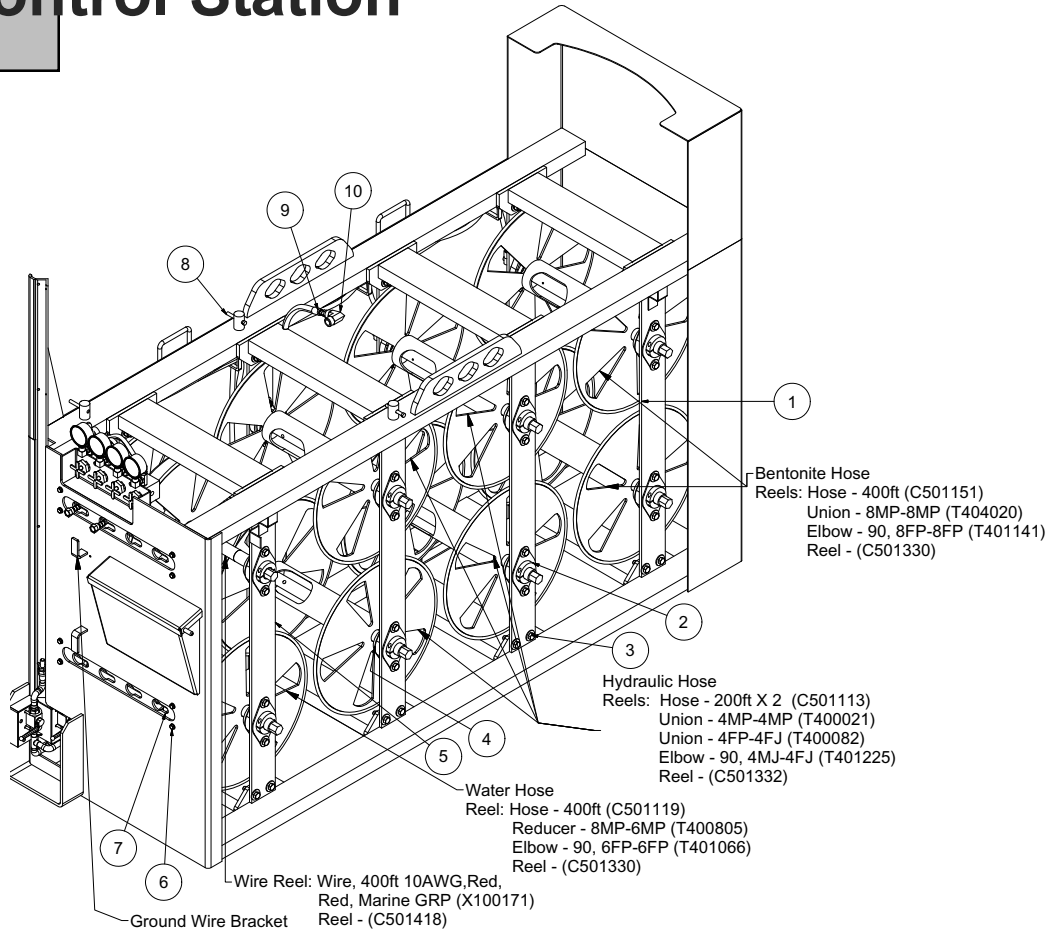
DANGER

ELECTRIC SHOCK
Death or serious injury will result.
Always install grounding stake
before connecting to power.
Do Not operate without
ground stake installed.

J200216

J200216

Control Station



101711-E

CS ASSY004

Control Station

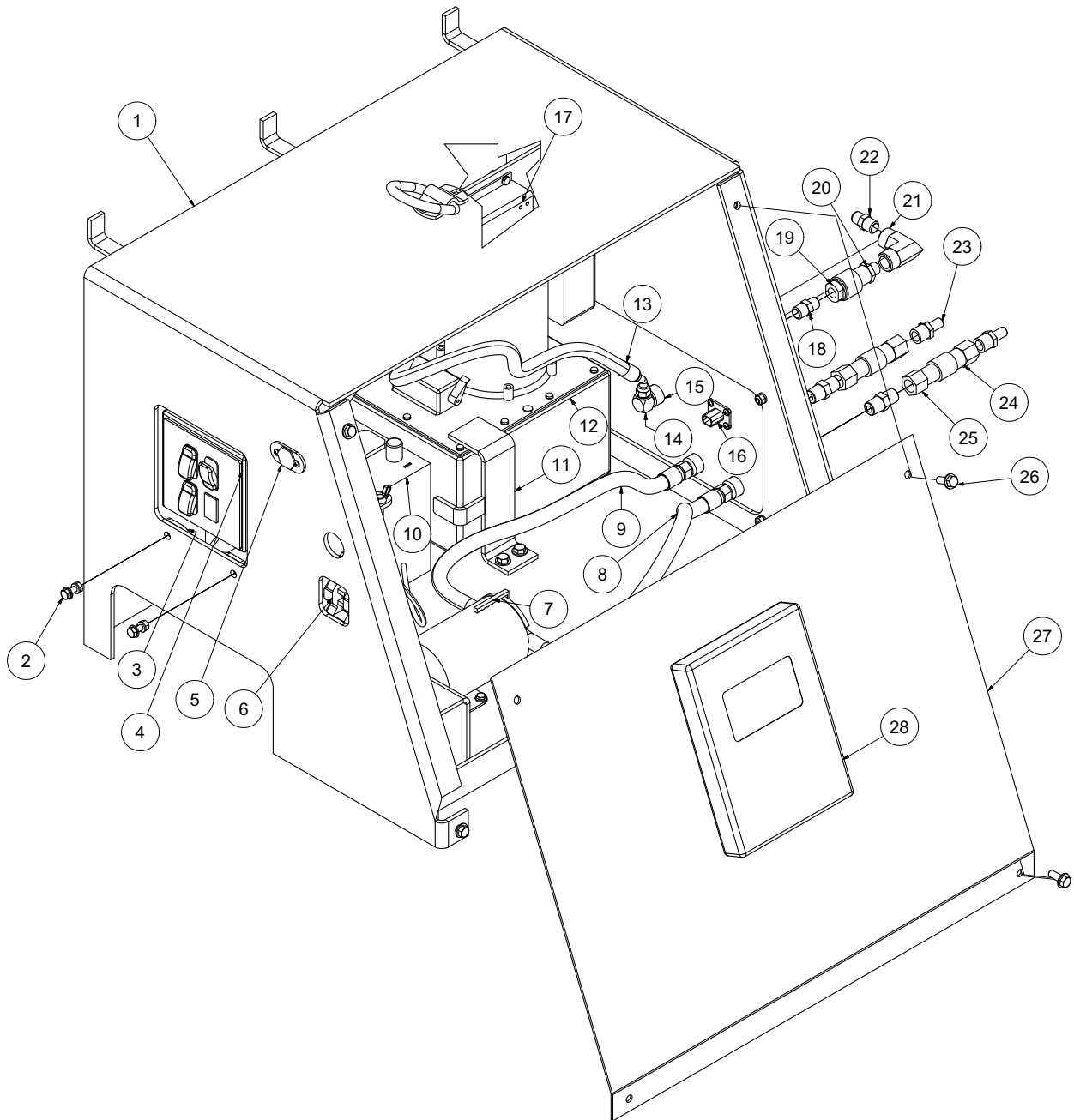
ITEM	QTY	PART NO.	DESCRIPTION
1	8	C501373	GRIP CLAMP WELDMENT
2	64	U000880	SCREW, HC 1/2"-13 - 2.00"
	128	U200100	WASHER, FLAT 1/2"
	64	U210111	WASHER, LOCK 1/2"
	64	U100120	NUT, HEX 1/2"-13
3	16	C501015	FLANGE, BEARING 1 1/2"
4	8	U000240	SCREW, HC 5/16"-18 X 1.50"
	8	U100040	NUT, HEX 5/16"-18
	8	U200040	WASHER, FLAT 5/16"
	8	U210040	WASHER, LOCK 5/16"
5	2	C501335	HOSE GUIDER
	4	C501245	HOSE GUIDER BRACE PLATE
6	3	8041213	SAFETY SNAP PIN
7	1	C501485	HOSE ASSY VAC 6 - 47" ST-ST
8	1	T401141	ELBOW, 90 1/2"FP - 1/2"FP
9	8	T400023	REDUCER, 3/8"MP - 1/4"FP
10	4	T402175	TEE, 3/8"FP X 3/8"FP X 3/8"MP
11	1	C501009	MANIFOLD BLOCK With NEEDLE VALVES
12	4	C501112	GAUGE, PRESSURE 10000PSI
13	4	T401060	ELBOW, 90 1/4"MP - 1/4"FP
14	3	T320299	FITTING, 1/2"MP - 1/2"MBARB
15	1	C501012	SLIP RING, 30AMP
	1	C501013	SLIP RING
16	3	C501014	SUPER SWIVEL, 1/2"
	3	T421011	NIPPLE, CLOSE 1/2"MP
17	1	8045843	HOSE ASSY VAC 4 - 62" ST-ST
18	1	8045870	HOSE ASSY VAC 4 - 41" ST-ST
19	4	T400050	REDUCER, 1/2"MP - 1/2"FP
20	4	C501152	SWIVEL, 1/2" - 90DEG
21	1	C501486	HOSE ASSY VAC 4 - 86" ST-ST
22	1	C501487	HOSE ASSY VAC 4 - 66" ST-ST
23	1	C501500	CONNECTION HOSE 1/2" - 36"LG
24	1	C501501	CONNECTION HOSE 1/2" - 58"LG
25	1	C501347	SIDE SHEET WELDMENT (FRONT)
	2	U000440	SCREW, HC 3/8"-16 X 1.25"
	2	U200600	WASHER, FLAT 3/8"
26	1	C501348	SIDE SHEET (BACK)
	2	U000440	SCREW, HC 3/8"-16 X 1.25"
	2	U200600	WASHER, FLAT 3/8"
*	1	C501445	REEL CRANK
*	1	C501450	GROUNDING ROD
*	1	C501446	GROUNDING WIRE
*	1	C501320	PLUMB BAR

101711-E

CS ASSY004

Control Station

PowerPack



091411-E

CS ASSY001

Control Station

PowerPack

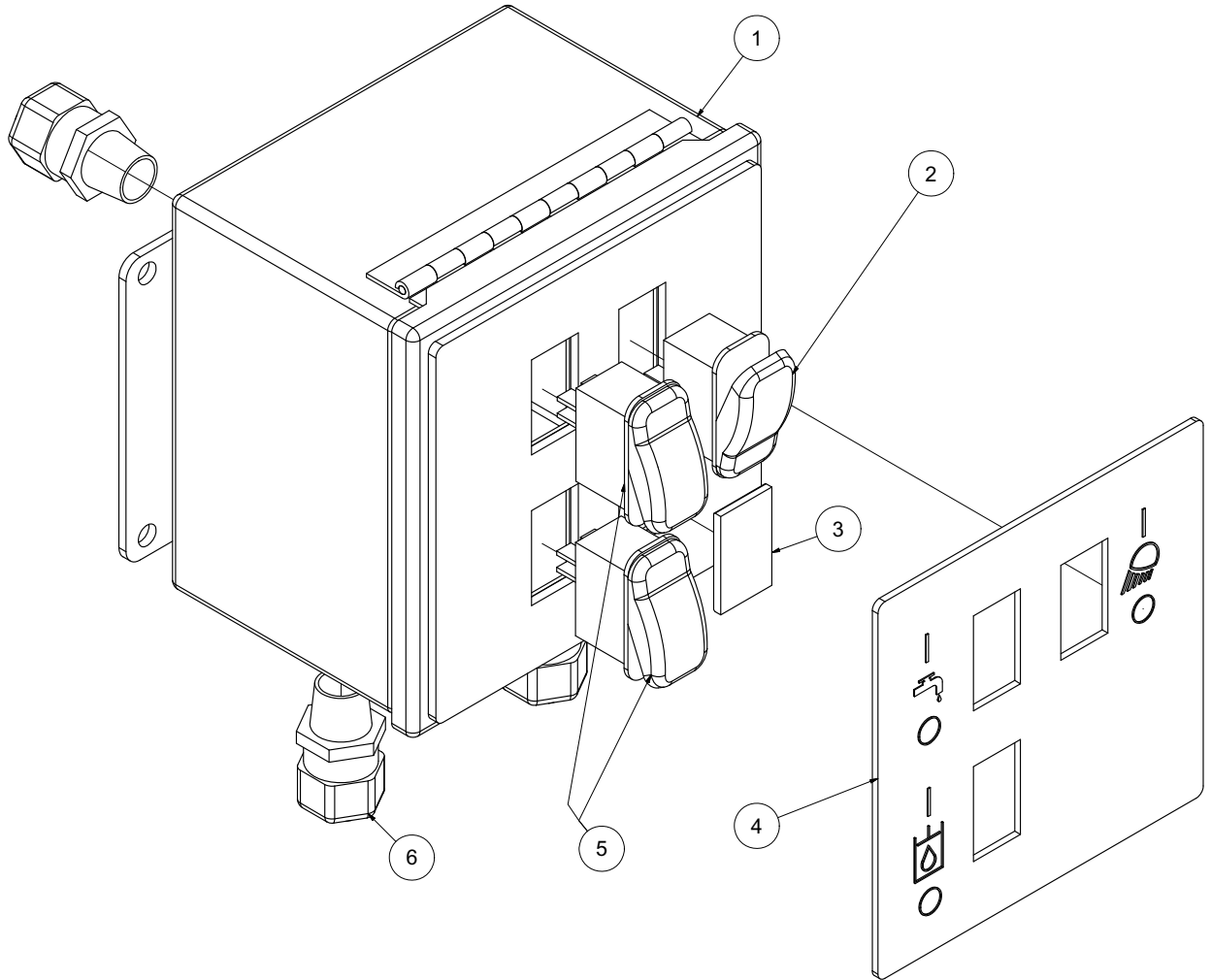
ITEM	QTY	PART NO.	DESCRIPTION
1	1	C501355	POWERPACK WELDMENT
2	2	U000020	SCREW, HEX 5/16"-18 X 1.00"
	2	U200040	WASHER, FLAT 5/16"
	2	U210040	WASHER, LOCK 5/16"
	2	U100040	NUT, HEX 5/16"-18
3	1	C501241	SWITCH BOX BRACKET WELDMENT
4	1	C501117	ELECTRICAL BOX WELDMENT
	4	U000040	SCREW, HEX 1/4"-20 X .750"
	4	U200020	WASHER, FLAT 1/4"
	4	U210020	WASHER, LOCK 1/4"
	4	U120100	NUT, HEX 1/4"-20
5	1	4800829	POWER OUTLET
	2	C400119	SCREW, PHILLIP 10-24 X .75"
	2	U210005	WASHER, LOCK #10
	2	U100010	NUT, HEX #10
6	1	C501017	GFCI
7	1	C501452	WATER, PUMP 12V
	4	U000060	SCREW, HEX 1/4"-20 X 1.00"
	4	U200020	WASHER, FLAT 1/4"
	4	U210020	WASHER, LOCK 1/4"
	4	U120100	NUT, LOCK 1/4"-20
8	1	C501151-26	HOSE, 1/2" - 26" LG
	1	8030524	PUSHLOCK #8 JIC
	1	T320350	FITTING, HOSE 1/2"MP - 1/2"HOSE
9	1	C501151-20	HOSE, 1/2" - 20" LG
	1	8030524	PUSHLOCK #8JIC
	1	T320350	FITTING, HOSE 1/2"MP - 1/2"HOSE
10	1	X400020	BATTERY, MT-34
	2	C501276	BATTERY HOLD DOWN VK
	1	8050016	STRAP, BATTERY
11	1	C501283	HYD. HOLD DOWN BRACKET
	2	U000440	SCREW, HEX 3/8"-16 X 1.25"
	2	U200600	WASHER, FLAT 3/8"
	2	U210060	WASHER, LOCK 3/8"
	2	U100060	NUT, HEX 3/8"
12	1	C501008	HYD. PUMP, AC 1/2HP
	1	T401102	ELBOW, 6MJ-6MP
13	1	C501370	HOSE ASSY VAC 6-23" 45-45
14	1	T401135	ELBOW, 90 8MP-6MJ
15	1	C501284	TOP COVER BACK PLATE WELDMENT
	4	U000020	SCREW, HEX 5/16"-18 X 1.00"
	4	U100040	NUT, HEX 5/16-18
	4	U210040	WASHER, LOCK 5/16"
	4	U200040	WASHER, FLAT 5/16"
16	1	X000380	RECEPTACLE, DT 4WAY FLANGE
	4	C400119	SCREW, PHILLIP 10-24 X .75
	4	U210005	WASHER, LOCK #10
	4	U100010	NUT, HEX #10
17	1	C501153	BATTERY CHARGER
	4	U000060	SCREW, HEX 1/4"-20 X 1.00"
	4	U210020	WASHER, LOCK 1/4"
	4	U100020	NUT, HEX 1/4-20
18	3	T400040	UNION, 1/2"MP-1/2"MP
19	1	C501449	HYD. QUICK DISCONNECT
20	1	C501448	HYD. QUICK DISCONNECT FEMALE
21	1	T401141	ELBOW, 90 1/2"FP - 1/2"FP
22	1	8031269	REDUCER, 1/2"MP - 3/8" MJ
23	2	T320299	FITTING, 1/2MP- 1/2"MBARB
24	2	8030663	FITTING, QUICK DISCONNECT FEMALE 1/2"
25	2	8030662	FITTING, QUICK DISCONNECT MALE 1/2"
26	4	U000420	SCREW, HEX 3/8"-16 X 1.00
	4	U200600	WASHER, FLAT 3/8"
27	1	C501414	MANUAL BOX PLATE
28	1	8030689	MANUAL BOX

091411-E

CS ASSY001

Control Station

Control Box Assembly



091611-E

CS ASSY003

Control Station

Control Box Assembly

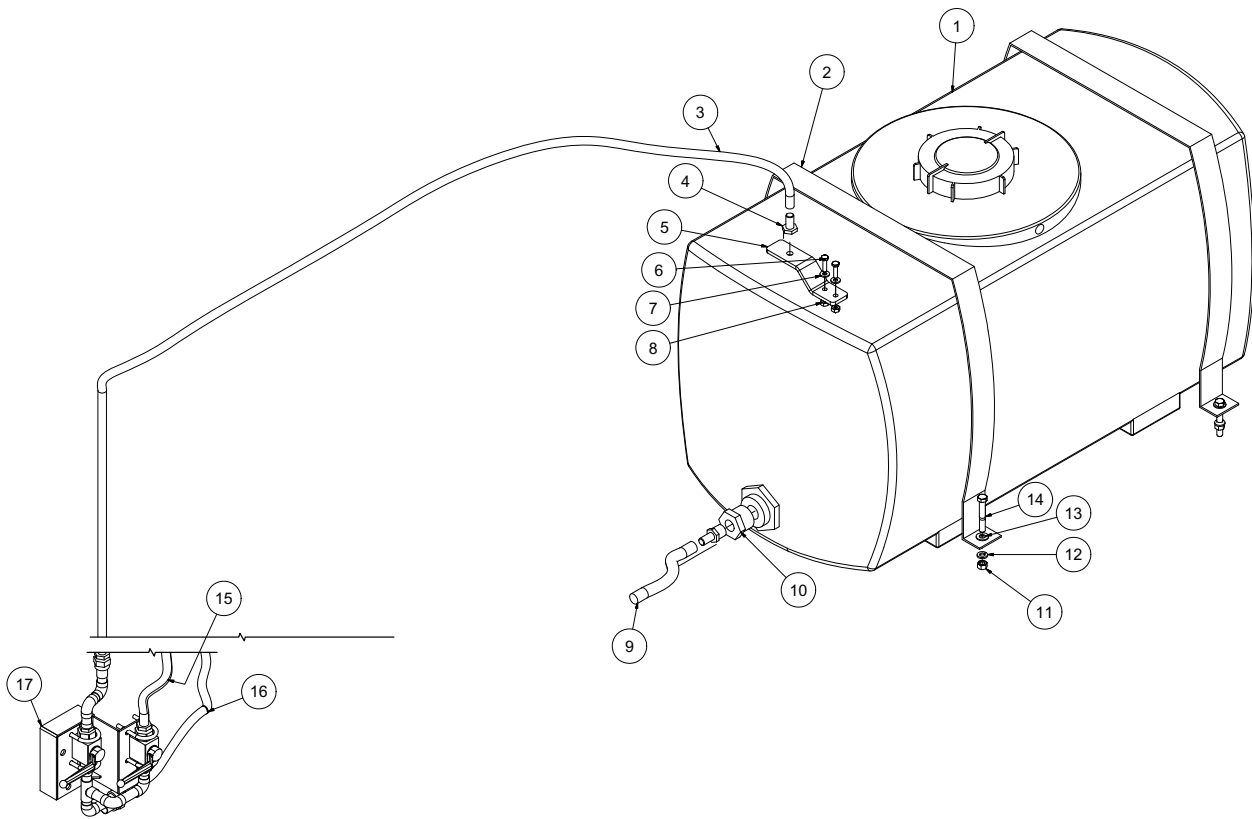
ITEM	QTY	PART NO.	DESCRIPTION
1	1	C501117	CONTROL BOX (CONTOL STATION)
2	1	X000271	SWITCH ROCKER DPST ON-NON-ON
3	1	X000290	PLUG, ROCKER HOLE
4	1	J200215	CONTROL STSTION CONTROL BOX DECAL
5	2	X000270	SWITCH ROCKER SPST ON-NON-OFF
6	3	X000113	STRAIN RELIEF, 1/2"

091611-E

CS ASSY003

Control Station

Water Tank Assembly



111811-E

CS ASSY002

Control Station

Water Tank Assembly

ITEM	QTY	PART NO.	DESCRIPTION
1	1	8045646	WATER TANK, 50 GALLON
2	2	8045646-1	STRAP, WATER TANK
3	1	C501440	WATER LEVEL LINE, HOSE CLEAR VINYL 1/2"-123'LG
4	5	T320299	FITTING, 1/2"MP - 1/2"MBARB
5	1	C501247	WATER HOSE HOLD DOWN BRACKET
6	2	U000060	SCREW, HC 1/4"-20 X 1.00'
7	2	U200020	WASHER, FLAT 1/4"
8	2	U120100	NUT, LOCK 1/4"-20
9	1	C501151-9	WATER TANK TO QD, HOSE WATER 1/2" - 9"LG
10	1	T403110	REDUCER, 1 1/4"MP - 1/2"FP GALV
11	4	U100060	NUT, HEX 3/8"-16
12	4	U210060	WASHER, LOCK 3/8"
13	4	U200600	WASHER, FLAT 3/8"
14	4	U000540	SCREW, HEX 3/8"-16 X 2.50"
15	1	C501151-84	HOSE TO QD/WATER PUMP, HOSE WATER 1/2" - 84"LG
16	1	C501151-14	HOSE TO WATER REEL, HOSE WATER 1/2" - 14"LG
17	1	C501384	BALL VALVE ASSEMBLY
	2	8031197	VALVE, BALL 1/2"
	4	U010017	U-BOLT, 1/4"-20
	8	U210020	WASHER, LOCK 1/4"
	8	U100020	NUT, HEX 1/4"-20
	1	C501444	COPPER PIPE ASSEMBLY

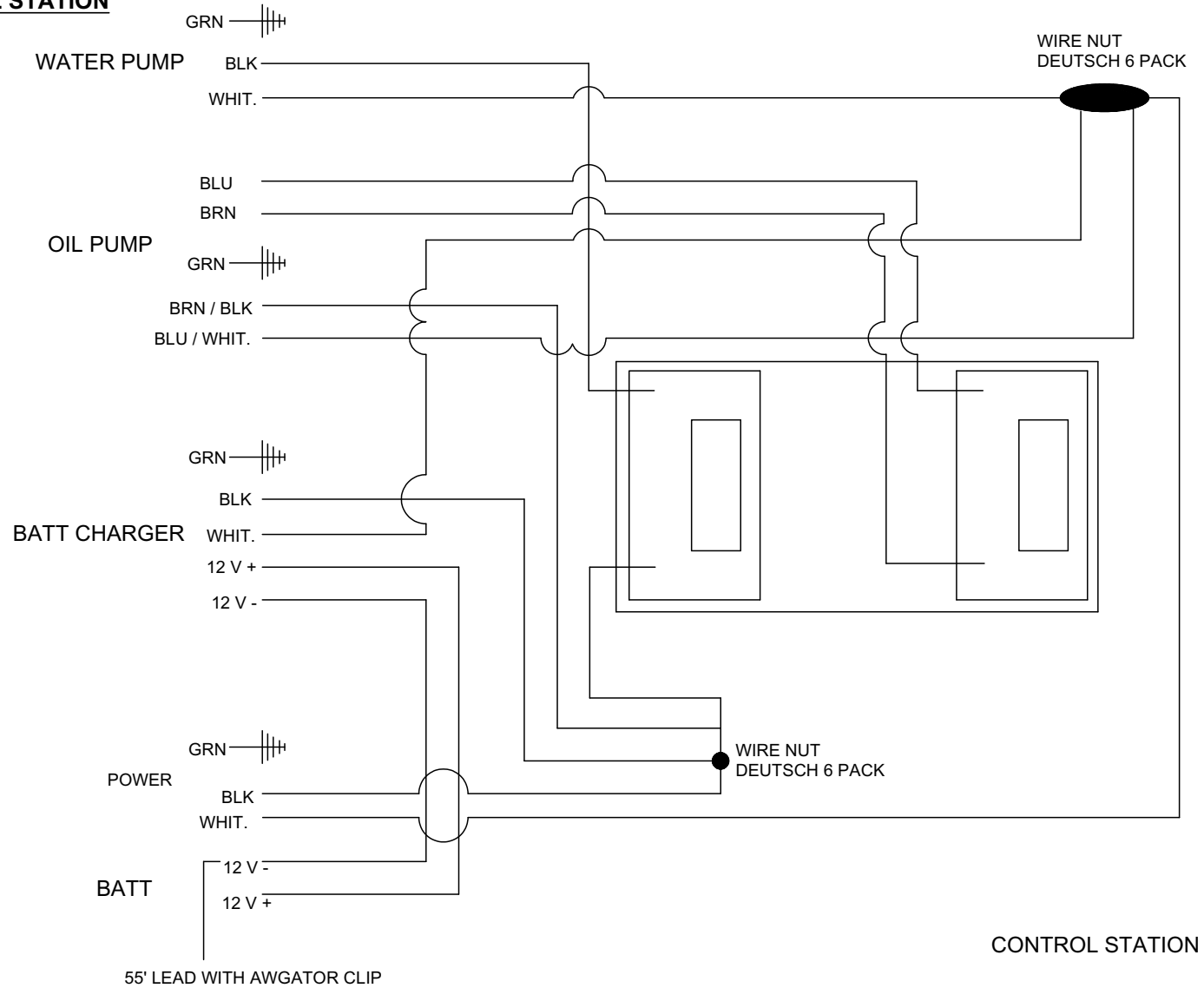
111811-E

CS ASSY002

PAGE LEFT BLANK

CONTROL STATION WIRING SCHEMATIC

CONTROL STATION



PAGE LEFT BLANK

SPX POWER TEAM® OTC®

SPX Corporation
5885 11th Street
Rockford, IL 61109-3699 USA

Internet Address:
<http://www.powerteam.com>
Tech. Services: (800) 477-8326
Fax: (800) 765-8326
Order Entry: (800) 541-1418
Fax: (800) 288-7031

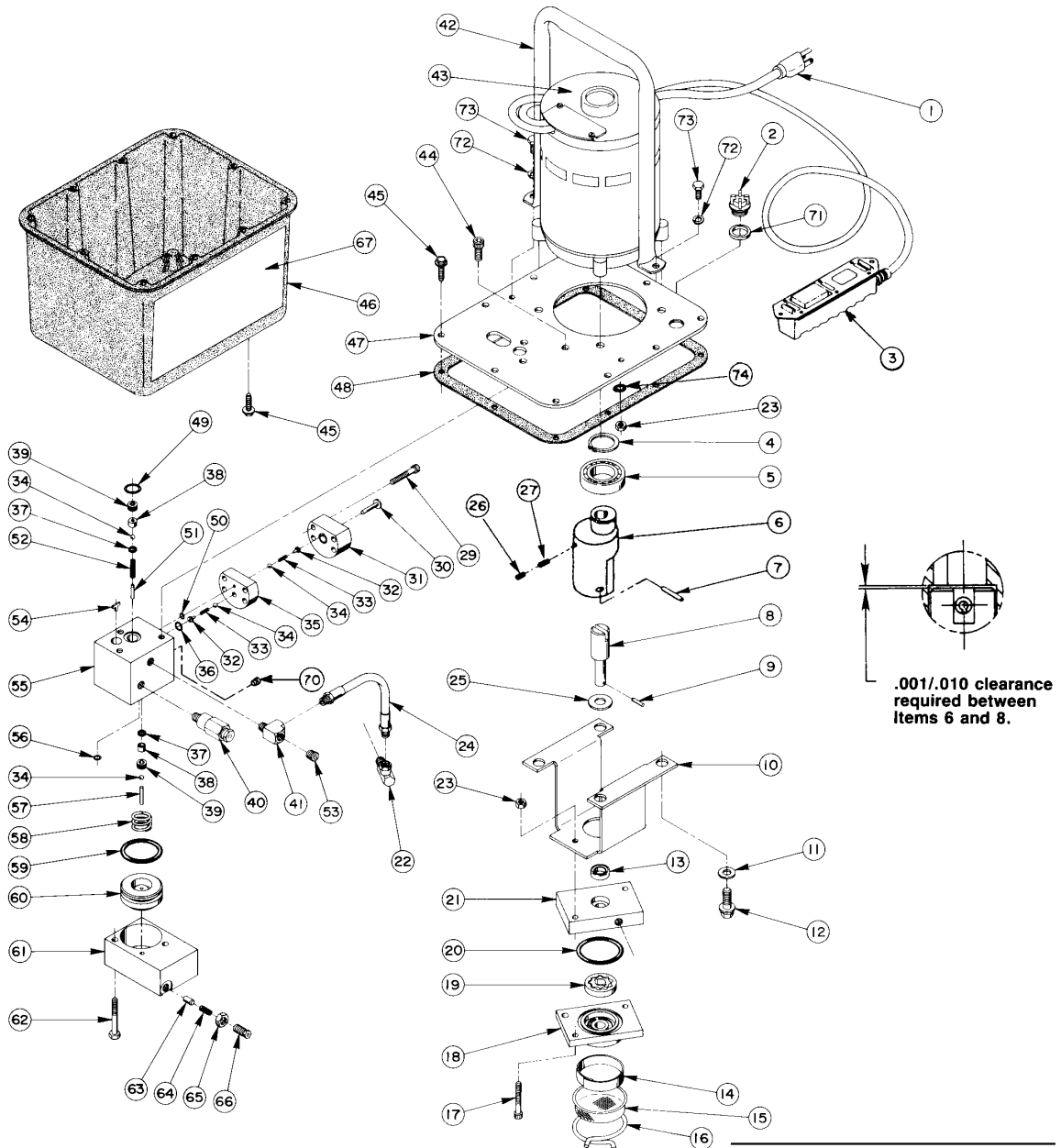
SPX Corporation
655 Eisenhower Drive
Owatonna, MN 55060-0995 USA
Phone: (507) 455-7000
Tech. Services: (800) 533-6127
Fax: (800) 955-8329
Order Entry: (507) 455-1480
Fax: (800) 283-8665
International Sales: (507) 455-7223
Fax: (507) 455-7746

Parts List for:

4044	PE17-SOLO	PE172AM
4044-50-110	PE172	PE172AM-50-220
4045	PE172-ABC	PE172F-CLEV
4046	PE172-ET-230	PE172H-CLEV
4046-50-110	PE172-FS	PE172M
4047	PE172A	PE172M-50-220
99150-B	PE172A-BOC	PE172SF-CLEV
HE172	PE172A-DAYCO	PE172-220-PFAFF
HE174	PE172A-EZE	PE173-PC
P116-10	PE172A-FINN	PE174
PA172	PE172A-GRC	PE174M
PA174	PE172A-ITR	PE174M-ETT
PE17-PARK	PE172AF-CLEV	PE174M-50-220
	PE172AH-CLEV	PE174-220-PFAFF

Form No. 100577

HYDRAULIC PUMP



Note: Shaded areas reflect last revision(s) made to this form.

Sheet No. 1 of 7

Rev. 18 Date: 15 Apr. 2001

Parts List, Form No. 100577, Back sheet 1 of 7

Item No.	Part No.	No. Req'd	Description
1	24733	1	Cord Set (Elect. Version)
2	20937	1	Filler/Vent Plug
	†27142	1	Filler/Vent Plug
3	25017	1	Remote Hand Switch Ass'y (Elect. Version; See Form No. 101644)
	10461	1	Remote Foot Switch Ass'y (For P116-10, PE172AF-CLEV, PE172-FS PE172F-CLEV, & PE172H-CLEV)
4	209798	1	Retaining Ring (1-3/16 Shaft)
5	209805	1	Ball Bearing
6	45596	1	Eccentric
7	10973	1	Slotted Spring Pin
8	304835	1	Drive Shaft
9	209794	1	Gerotor Drive Pin
10	52174	1	Pump Mounting Bracket
11	10258	4	Washer (3/8 bolt)
12	213663	4	Cap Screw (3/8-16 UNC X 1" Lg.; Torque to 230/250 in. lbs.)
13	*304830	1	Seal
	†250156	1	Seal
14	21846	1	Filter Support
15	21608	1	Filter
16	11461	1	Clamp Ring
17	10854	2	Cap Screw (1/4-20 UNC X 1-3/4 Lg.; Torque to 60/80 in. lbs.)
18	61169	1	Lower Gerotor Housing
19	304826	1	Gerotor Set
20	*10922	1	O-ring (2-1/8 X 1-15/16 X 3/32)
	†250158	1	O-ring (2-1/8 X 1-15/16 X 3/32)
21	61170	1	Upper Gerotor Housing
22	14440	1	Swivel Elbow Fitting
23	10199	4	Nut (Air & Electric Versions)
24	304819	1	Hose Ass'y
25	12595	1	Brass Washer (1/2 Bolt)
26	10519	1	Set Screw (Torque to 60/80 in. lbs.)
27	10136	1	Set Screw (Air Version)
29	10022	4	Cap Screw (1/4-20 UNC X 1-1/2 Lg.; Torque to 110/130 in. lbs.)
30	304820	1	High Pressure Piston
31	45560	1	Piston Block
32	24549	2	Valve Guide
33	*10445	2	Compression Spring (5/32 O.D. X 3/4 Lg.)
34	*12223	4	Ball (3/16 Dia.)
35	45559	1	Check Block
36	*14763	1	O-ring (7/16 X 5/16 X 1/16)
	†13472	1	O-ring (7/16 X 5/16 X 1/16)
37	*10442	2	Copper Washer (3/8 X 1/4 X 1/32 Thk.)
38	*209787	2	Replaceable Seat
39	209797	2	Hollow Lock Screw (7/16-20 UNF-3A; Torque to 110/130 in. lbs.)
40	21278	1	Relief Valve Ass'y
	21278-88	1	Relief Valve Ass'y (For PE172A-ITR & PE172A-FINN; Set at 8,900/9,500)
41	19463	1	Tee Fitting
42	47492	1	Handle (Air & Electric Versions)
43	58196WH2	1	Electric Motor
	58196BK2	1	Electric Motor (For PE172AF-CLEV, PE172AH-CLEV, PE172F-CLEV, & PE172H-CLEV)
	58196BL20	1	Electric Motor (For P116-10)
	13643	1	Air Motor (For models 4045, 4047, PA172, & PA174 manufactured after July 1991)
44	10030	1	Cap Screw (5/16-18 UNC X 3/4 Lg.; Torque to 220/240 in. lbs.)
45	209799	AR	Self-Tapping Screw (1/4-10 X 7/8 Lg.)
	10177	10	Screw (1/4-20 UNC X 3/4 Lg.; For pumps with metal reservoirs.)
46	61165	1	Reservoir
	61165BK2	1	Reservoir (For PE172AF-CLEV, PE172AH-CLEV, PE172SF-CLEV, PE172F-CLEV, & PE172H-CLEV)
	64538OR9	1	Reservoir (For PE172M, PE172AM, PE174AM, PE172AM-50-220, PE172A-50-220 & PE174M-50-220)
	40063OR9	1	Reservoir (For PE17-SOLO)

Note: Shaded areas
reflect last revision(s)
made to this form.

Continued -

Part numbers marked with an asterisk (*) are contained in Repair Kit No. 300430.
Part numbers marked with a dagger (†) are contained in EPR Seal Kit No. 300648.
AR: As Required

Parts List

Form No. 100577

Item No.	Part No.	No. Req'd	Description
47	61166BK2	1	Cover Plate
	61166RE2	1	Cover Plate (For P116-10)
	66218BK2	1	Cover Plate (For PE17-PARK, PE172-ABC, PE172A-BOC & PE17-SOLO)
48	*40164	1	Cover Gasket
49	*10273	1	O-ring (13/16 X 5/8 X 3/32)
	† 250157	1	O-ring (13/16 X 5/8 X 3/32)
50	*10265	1	O-ring (5/16 X 3/16 X 1/16)
	† 17714	1	O-ring (5/16 X 3/16 X 1/16)
51	12149	1	Dowel Pin (1/8 Dia. X 3/4 Lg.)
52	*16057	1	Compression Spring (3/16 O.D. X 1" Lg.)
53	10427	1	Pipe Plug (1/8 NPTF)
54	209795	1	Outlet Ball Stop
55	61167	1	Check Body
56	*10266	1	O-ring (3/8 X 1/4 X 1/16)
	† 17715	1	O-ring (3/8 X 1/4 X 1/16)
57	211843	1	Dowel Pin (3/16 Dia. X 1" Lg.; Loctite Pin in Piston Hole with Radius End Out)
58	*16346	1	Compression Spring (1" O.D. X 7/8 Lg.)
59	*10283	1	O-ring (2" X 1-5/8 X 3/16)
	† 250159	1	O-ring (2" X 1-5/8 X 3/16)
60	46063	1	Automatic Valve Piston
61	52167	1	Automatic Valve Block
62	13037	2	Cap Screw (1/4-20 UNC X 2" Lg.; Torque to 40/50 in. lbs.)
63	15156	1	Dowel Pin (1/4 Dia. X 1/2 Lg.; Tapered End Toward Spring)
64	11221	1	Compression Spring (1/4 O.D. X 1" Lg.)
65	10386	1	Locknut (3/8-24 UNF)
66	*29786	1	Adjusting Screw
67	350126	2	Trade Name Decal (For 4044, 4045, 4046, 4046-50-220 & 4047)
	304840	2	Trade Name Decal (For 4044-50-110)
	307137	2	Trade Name Decal (For 4046-50-110)
	309219	2	Trade Name Decal (For PE17 Series)
	305101	2	Trade Name Decal (For HE172)
	305257	2	Trade Name Decal (For HE174)
	211929	2	Trade Name Decal (For 99150-B)
	252187	2	Trade Name Decal (For PE172-220-PFAFF & PE174-220-PFAFF)
70	15130	1	Pipe Plug (1/8 NPTF)
71	200415	1	Rubber Seal
	† 17723	1	Rubber Seal
72	10245	2	Lockwasher (1/4 Bolt; Air & Electric Versions)
73	10009	2	Cap Screw (1/4-20 UNC X 3/4 Lg.; Torque to 60/80 in. lbs.; Air & Electric Versions)
74	11351	2	Washer (Electric Versions)

PARTS INCLUDED BUT NOT SHOWN

	*200188	1	Warning Decal (Elect. versions)
	203972	1	Decal (CSA Approval; For 4044, 4046-50-220, 4046, PE172A-ITR & PE172A-FINN)
	† 250328	1	Decal (EPR Seals)
	† 11278	1	Tube Elbow
	† 15061	1	Male Connector
	† 251229	1	Oil Line
	10673	1	Fitting (For PE172AF-CLEV & PE172AH-CLEV)
	251617	1	Coupler (For PE172AF-CLEV, PE172AH-CLEV, PE172F-CLEV, & PE172H-CLEV)
	10909	1	Plug Fitting (3/8 NPTF; For PE172AF-CLEV, & PE172AH-CLEV)
	251874	1	Decal (ISO; For PE172A-DAYCO)
	9796	1	Coupler (For PE172A-EZE)
	351060	1	Gasket (Between motor and cover plate)
	253524	1	Serial No. Decal (PFAFF; For PE172-220-PFAFF)
	16339	1	Foot Switch Guard (For P116-10)
	42576WH2	1	Control Box Cover (For PE17-SOLO)
	16254	1	90° Elbow Fitting (For PE172F-CLEV & PE172H-CLEV)

Part numbers marked with an asterisk (*) are contained in Repair Kit No. 300430.
 Part numbers marked with a dagger (†) are contained in EPR Seal Kit No. 300648.

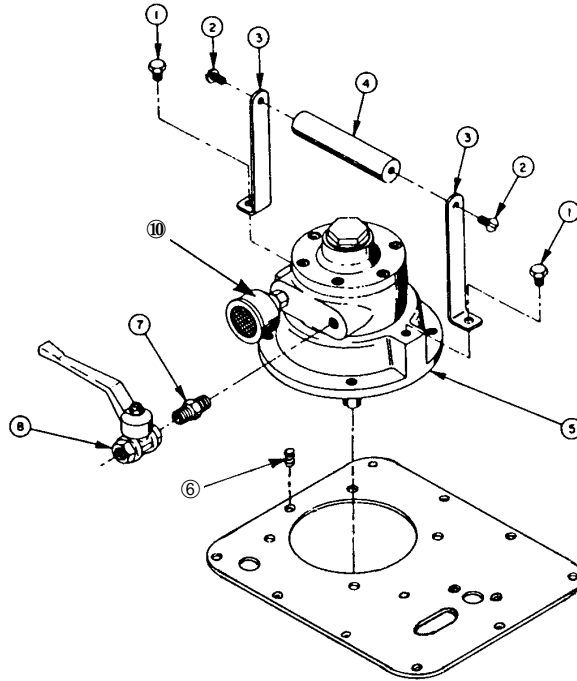
Note: Shaded areas reflect last revision(s) made to this form.

Sheet No. 2 of 7
 Rev. 18 Date: 15 Apr. 2001

AIR MOTOR VERSION

(For model no.'s 4045, 4047, PA172 & PA174 manufactured before July 1991)

Note: For air version pump models manufactured after July 1991, refer to the list on back sheet 1 of 7.



Item No.	Part No.	No. Req'd	Description
1	11573	2	Cap Screw (5/16-18 UNC X 1/2 Lg.)
2	10174	2	Machine Screw (1/4-20 UNC X 1/2 Lg.)
3	28157	2	Bracket
4	28158	1	Handle
5	*33405	1	Air Motor
6	15668	1	Set Screw (1/4-20 UNC X 1/2 Lg.; Turn in Until Flush with Cover Plate)
7	10672	1	Straight Fitting (For 4045 & 4047)
	12328	1	Straight Fitting (For PA172 & PA174)
8	211629	1	Directional Valve (For 4045 & 4047)
	13645	1	Directional Valve (For PA172 & PA174)
10	252579	1	Muffler

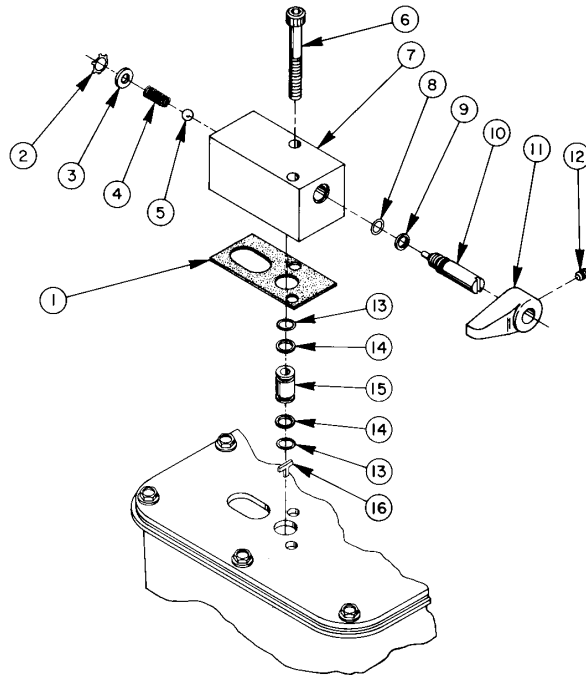
*Note: For air motor repair kit, order no. 252170.

Refer to any operating instructions included with this product for detailed information about operation, testing, disassembly, reassembly, and preventive maintenance.

Items found in this parts list have been carefully tested and selected. **Therefore: Use only genuine replacement parts!**

Additional questions can be directed to our Technical Services Department.

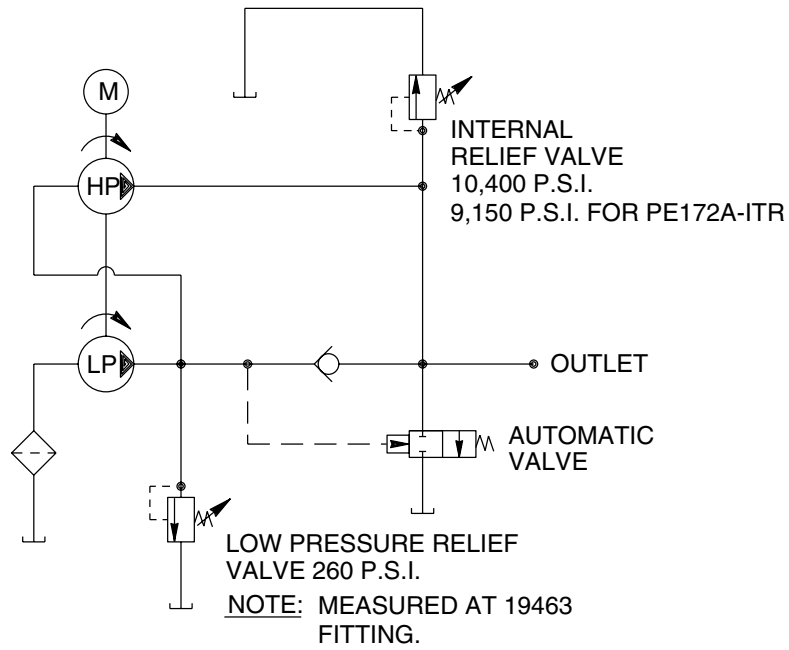
OPTIONAL VALVE ASSEMBLIES 2 Position, 2-Way Manual Valve



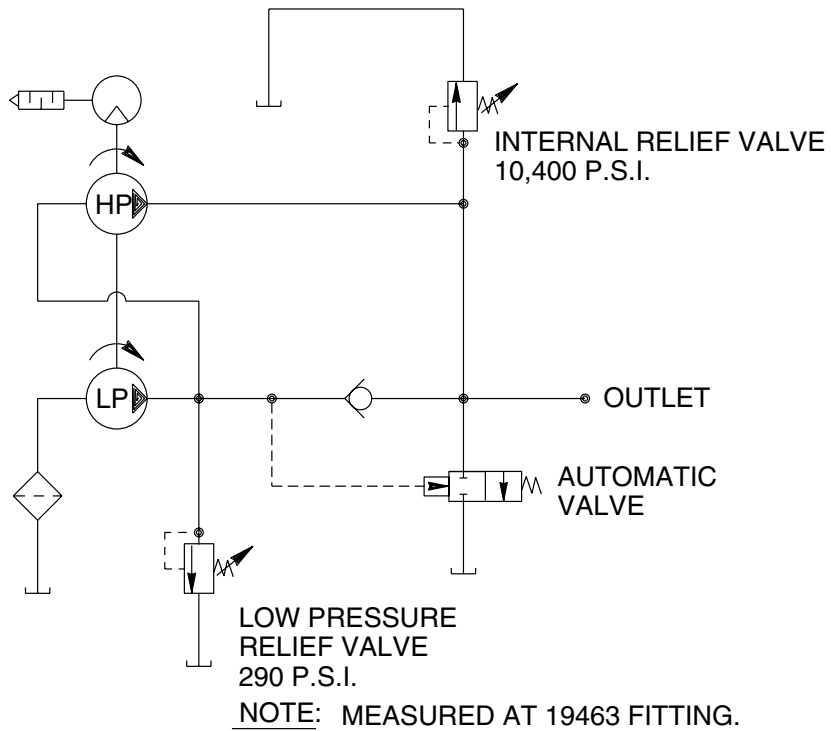
Item No.	Part No.	No. Req'd	Description	Item No.	Part No.	No. Req'd	Description
1	*304829	1	Gasket	10	304849	1	Release Valve Screw
2	*11088	1	Retaining Ring (9/16 Shaft)	11	213109	1	Release Valve Handle
3	11089	1	Washer (3/16 Bolt)	12	10556	1	Set Screw (1/4-20 UNC X 1/4 Lg.; Torque to 30/50 in. lbs.)
4	*11024	1	Compression Spring (1/4 O.D. X 5/8 Lg.)	13	*10268	2	O-ring (1/2 x 3/8 X 1/16)
5	*10423	1	Steel Ball (9/32 Dia.)	†17716		2	O-ring (1/2 x 3/8 X 1/16)
6	209945	2	Cap Screw (5/16-18 UNC X 2-1/2 Lg.; Torque to 220/240 in. lbs.)	14	*11863	2	Backup Washer (1/2 X 3/8 X 1/16)
7	52168	1	Valve Body	15	202505	1	Coupling
8	*10267	1	O-ring (7/16 X 5/16 X 1/16)	16	209795	1	Outlet Ball Stop (Part of the Basic Pump Ass'y)
	†13472	1	O-ring (7/16 X 5/16 X 1/16)		52170	1	Complete Valve Ass'y (Consists of Items 1 thru 15)
9	*15085	1	Backup Washer (7/16 X 5/16 X 3/64 Thk.)				

Part numbers marked with an asterisk (*) are contained in Repair Kit No. 300430.
Part numbers marked with a dagger (†) are contained in EPR Seal Kit No. 300648.

HYDRAULIC SCHEMATIC FOR ELECTRIC MOTOR PUMPS



HYDRAULIC SCHEMATIC FOR AIR MOTOR PUMPS



PAGE LEFT BLANK

WARRANTY/RETURN GOODS

McLAUGHLIN LIMITED WARRANTY

The Manufacturer warrants its products to be free from defects in material and workmanship for a period of twelve months from the date of shipment from the factory. The Manufacturer shall not be responsible for any damage resulting to or caused by its products by reason of installation, improper storage, unauthorized service, alteration of the products, neglect, or abuse, or use of the product in a manner inconsistent with its design. This warranty does not extend to any component parts not manufactured by Manufacturer; however, Manufacturer's warranty herein shall not limit any warranties made by manufacturers of component parts which may extend to Buyer.

Claims or defects in material and workmanship shall be made in writing to Manufacturer within ten days of discovery of defect. Manufacturer may either send a service representative or have the product returned to its factory at Buyer's expense for inspection. Upon notification of defect, Manufacturer will issue a return good authorization number to Buyer. The return goods authorization number must accompany the product returned. If judged by the Manufacturer to be defective in material or workmanship, the product will be replaced or repaired at the option of Manufacturer, free from all charges except authorized transportation. Buyer shall be responsible for all maintenance services consisting of lubrication and cleaning of equipment, replacing expendable parts, making minor adjustments and performing operating checks, all in accordance with procedures outlined in Manufacturer's maintenance literature.

THE FOREGOING WARRANTY IS IN LIEU OF ALL OTHER WARRANTIES, AND NO REPRESENTATIONS, GUARANTEES, OR WARRANTIES, EXPRESS OR IMPLIED, (INCLUDING BUT NOT LIMITED TO, A WARRANTY OF MERCHANTABILITY OR FITNESS FOR A PARTICULAR PURPOSE,) ARE MADE BY THE MANUFACTURER IN CONNECTION WITH THE MANUFACTURE OR SALE OF ITS PRODUCTS. NO EMPLOYEE, DISTRIBUTOR OR REPRESENTATIVE IS AUTHORIZED TO CHANGE THIS WARRANTY IN ANY WAY OR GRANT ANY OTHER WARRANTY ON BEHALF OF MANUFACTURER.

THE REMEDIES OF BUYER SET FORTH HEREIN ARE EXCLUSIVE AND ARE IN LIEU OF ALL OTHER

BEYOND ITS OBLIGATION TO REPAIR OR REPLACE, AT ITS OPTION, ANY PRODUCT OR PART FOUND BY MANUFACTURER TO BE DEFECTIVE IN MATERIAL OR WORKMANSHIP. MANUFACTURER SHALL NOT BE LIABLE FOR COST OF INSTALLATION AND/OR REMOVAL OR BE RESPONSIBLE FOR DIRECT, INDIRECT, SPECIAL OR CONSEQUENTIAL DAMAGES OF ANY NATURE.

FOR SERVICE OR ASSISTANCE, SEE THE AUTHORIZED McLAUGHLIN DEALER IN YOUR AREA.

GENERAL RETURNS FOR MERCHANDISE

1. All material returned to McLaughlin Mfg. Company must have a return authorization number. This number can be obtained by calling the dealer from whom the material was originally purchased.
2. All returned material must be shipped PREPAID.
3. Material without a material authorization number or returned collect will be refused at our dock.
4. All material ordered incorrectly or new material returned for no valid reason will be subject to a 20% restocking charge.
5. In the case of warranty claims, a letter explaining the problem or requesting repair must accompany the material.
6. On warranty consideration, all material shipped by McLaughlin will be invoiced until the defective material is returned for inspection. After inspection, credit will be issued for all parts deemed defective.
7. All return authorized numbers expire 30 days after issue. After this time, warranty claims and material returns are void, and merchandise must be paid in full.
8. McLaughlin must be notified and authorize all warranty work performed by your service personnel. This authorization must be obtained PRIOR to any work being performed for proper warranty consideration. Credit will not be issued for unauthorized service work performed.

