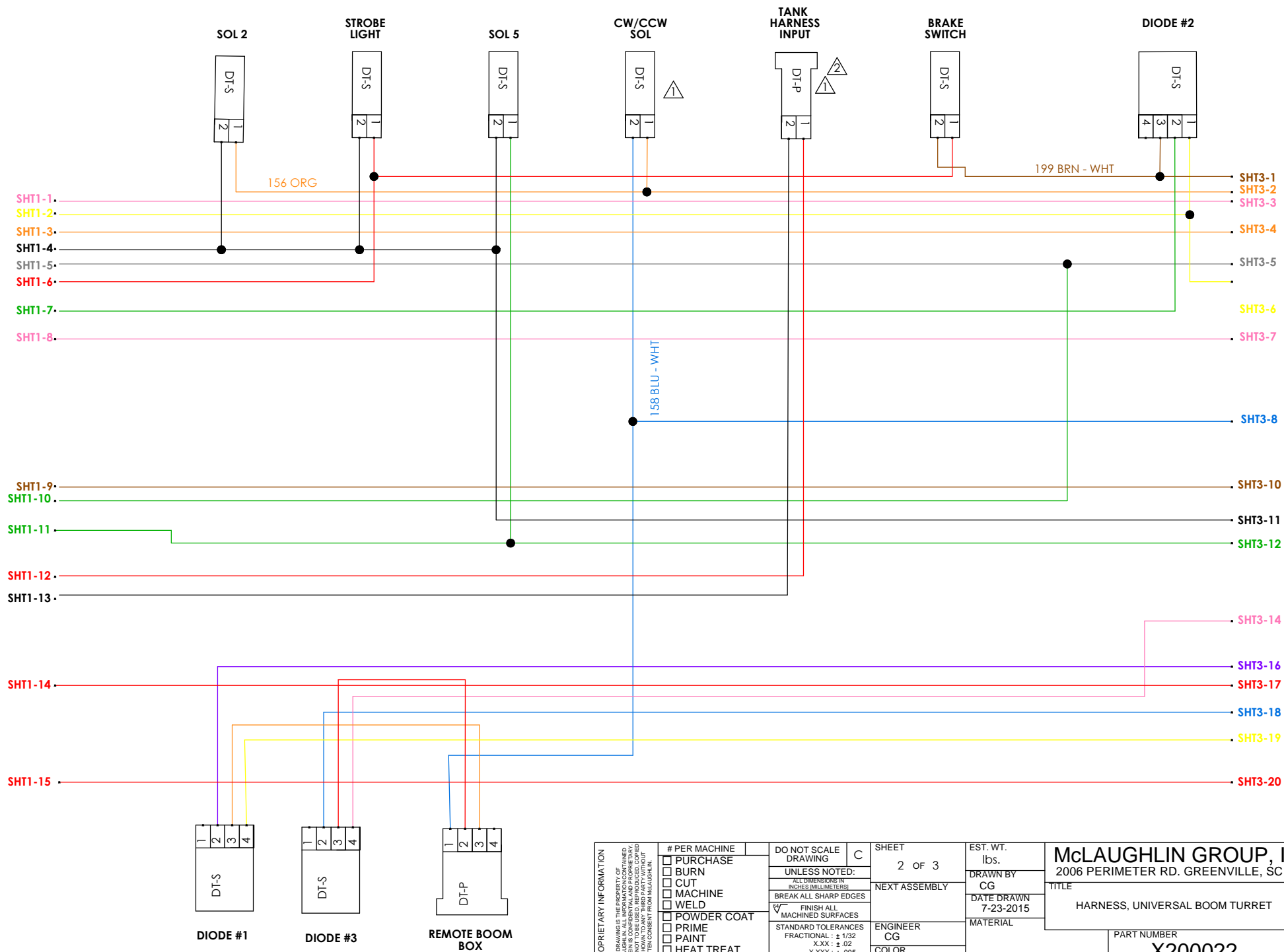
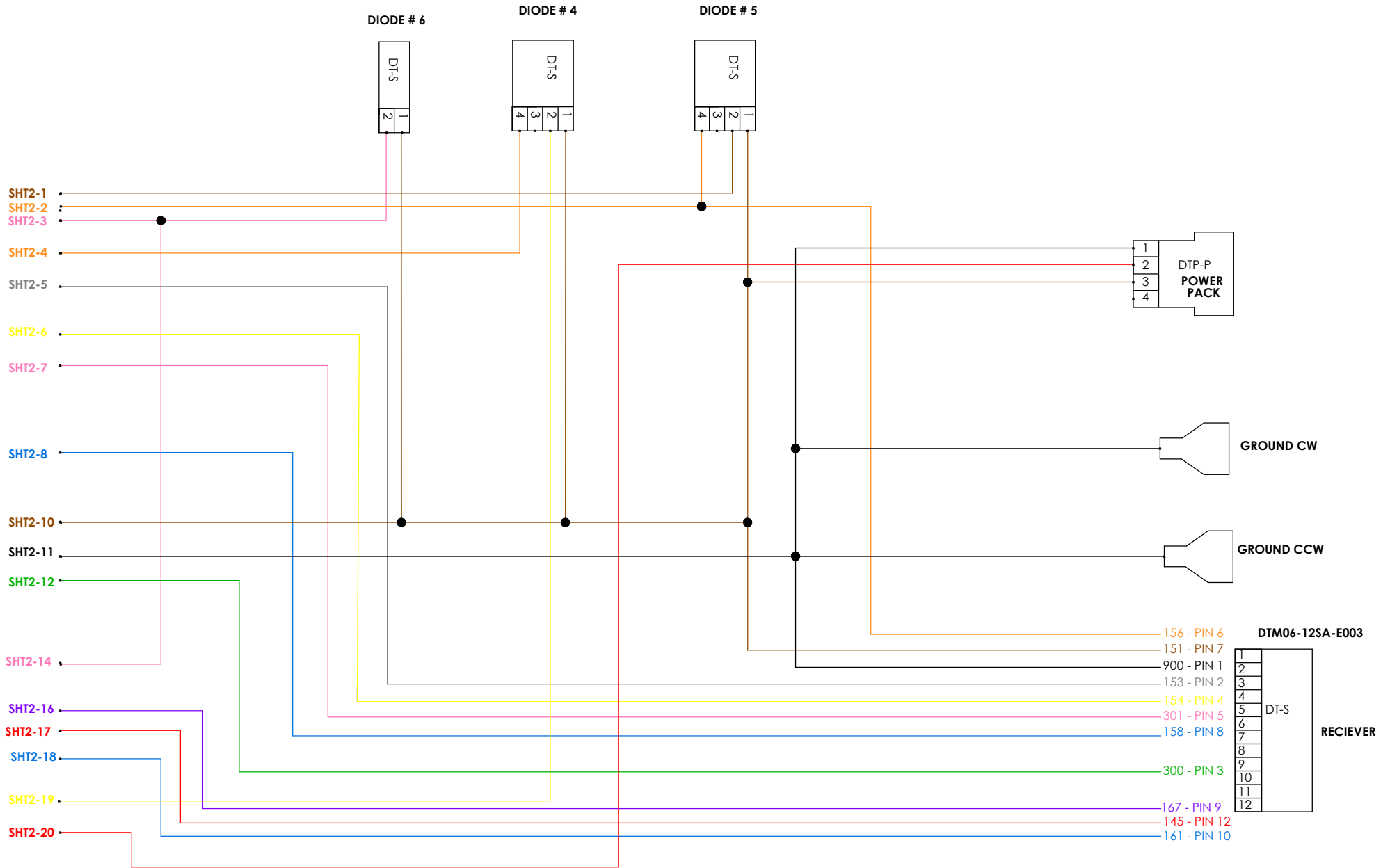


REVISIONS			
REV.	DESCRIPTION	DATE	BY
1	CHANGED WIRE ORIENTATION	6/15/2016	CG
2	CHANGED WIRE ORIENTATION ON TANK INPUT PLUG	7/27/2016	CG
3	REVISED PER ECN 0313171	3/13/2017	ID

<b>PROPRIETARY INFORMATION</b> THIS DRAWING IS THE PROPERTY OF McLAUGHLIN GROUP, INC. ALL INFORMATION CONTAINED HEREIN IS UNCLASSIFIED EXCEPT WHERE SHOWN OTHERWISE. IT IS NOT TO BE USED, REPRODUCED, COPIED, OR DISCLOSED IN ANY MANNER WITHOUT WRITTEN CONSENT FROM McLAUGHLIN.	<input checked="" type="checkbox"/> PURCHASE <input type="checkbox"/> BURN <input type="checkbox"/> CUT <input type="checkbox"/> MACHINE <input type="checkbox"/> WELD <input type="checkbox"/> POWDER COAT <input type="checkbox"/> PRIME <input type="checkbox"/> PAINT <input type="checkbox"/> HEAT TREAT <input type="checkbox"/> ZINC	DO NOT SCALE DRAWING UNLESS NOTED: ALL DIMENSIONS IN INCHES (MILLIMETERS) BREAK ALL SHARP EDGES FINISH ALL MACHINED SURFACES	SHEET 1 of 3 NEXT ASSEMBLY ENGINEER CG COLOR	EST. WT. lbs. DRAWN BY CG DATE DRAWN 7-23-2015 MATERIAL	<b>McLAUGHLIN GROUP, INC.</b> 2006 PERIMETER RD. GREENVILLE, SC 29605 TITLE HARNESS, UNIVERSAL BOOM TURRET PART NUMBER X200022 REV 3
---	--	--	---	---	---



PROPRIETARY INFORMATION THIS DRAWING IS THE PROPERTY OF McLAUGHLIN GROUP, INC. ALL INFORMATION CONTAINED HEREIN IS UNCLASSIFIED EXCEPT WHERE SHOWN OTHERWISE. IT IS NOT TO BE REPRODUCED, COPIED, OR TRANSMITTED IN ANY FORM OR BY ANY MEANS WITHOUT THE WRITTEN CONSENT FROM McLAUGHLIN.	<input type="checkbox"/> PURCHASE <input type="checkbox"/> BURN <input type="checkbox"/> CUT <input type="checkbox"/> MACHINE <input type="checkbox"/> WELD	DO NOT SCALE DRAWING UNLESS NOTED: ALL DIMENSIONS IN INCHES (MILLIMETERS) BREAK ALL SHARP EDGES FINISH ALL MACHINED SURFACES	SHEET 2 of 3	EST. WT. lbs.	<b>McLAUGHLIN GROUP, INC.</b> 2006 PERIMETER RD. GREENVILLE, SC 29605 TITLE HARNESS, UNIVERSAL BOOM TURRET PART NUMBER <b>X200022</b>	
	<input type="checkbox"/> POWDER COAT <input type="checkbox"/> PRIME <input type="checkbox"/> PAINT <input type="checkbox"/> HEAT TREAT <input type="checkbox"/> ZINC	STANDARD TOLERANCES FRACTIONAL: ± 1/32 X.XXX: ± .02 X.XXX: ± .005 ANGULAR: ± 1°	NEXT ASSEMBLY	DATE DRAWN 7-23-2015		MATERIAL
			ENGINEER CG			
			COLOR			



<b>PROPRIETARY INFORMATION</b> THIS DRAWING IS THE PROPERTY OF McLAUGHLIN GROUP, INC. ALL INFORMATION CONTAINED HEREIN IS UNCLASSIFIED EXCEPT WHERE SHOWN OTHERWISE. IT IS NOT TO BE USED, REPRODUCED, COPIED, OR DISCLOSED IN ANY MANNER WITHOUT THE WRITTEN CONSENT FROM McLAUGHLIN GROUP, INC.	<input type="checkbox"/> PURCHASE <input type="checkbox"/> BURN <input type="checkbox"/> CUT <input type="checkbox"/> MACHINE <input type="checkbox"/> WELD	DO NOT SCALE DRAWING UNLESS NOTED: <small>ALL DIMENSIONS IN INCHES (MILLIMETERS)</small> BREAK ALL SHARP EDGES FINISH ALL MACHINED SURFACES	SHEET 3 of 3	EST. WT. lbs. CG	<b>McLAUGHLIN GROUP, INC.</b> 2006 PERIMETER RD. GREENVILLE, SC 29605 TITLE HARNESS, UNIVERSAL BOOM TURRET PART NUMBER <b>X200022</b>
	<input type="checkbox"/> POWDER COAT <input type="checkbox"/> PRIME <input type="checkbox"/> PAINT <input type="checkbox"/> HEAT TREAT <input type="checkbox"/> ZINC	STANDARD TOLERANCES FRACTIONAL : ± 1/32 X.XX : ± .02 X.XXX : ± .005 ANGULAR : ± 1°	NEXT ASSEMBLY ENGINEER CG COLOR	DATE DRAWN 7-23-2015 MATERIAL	