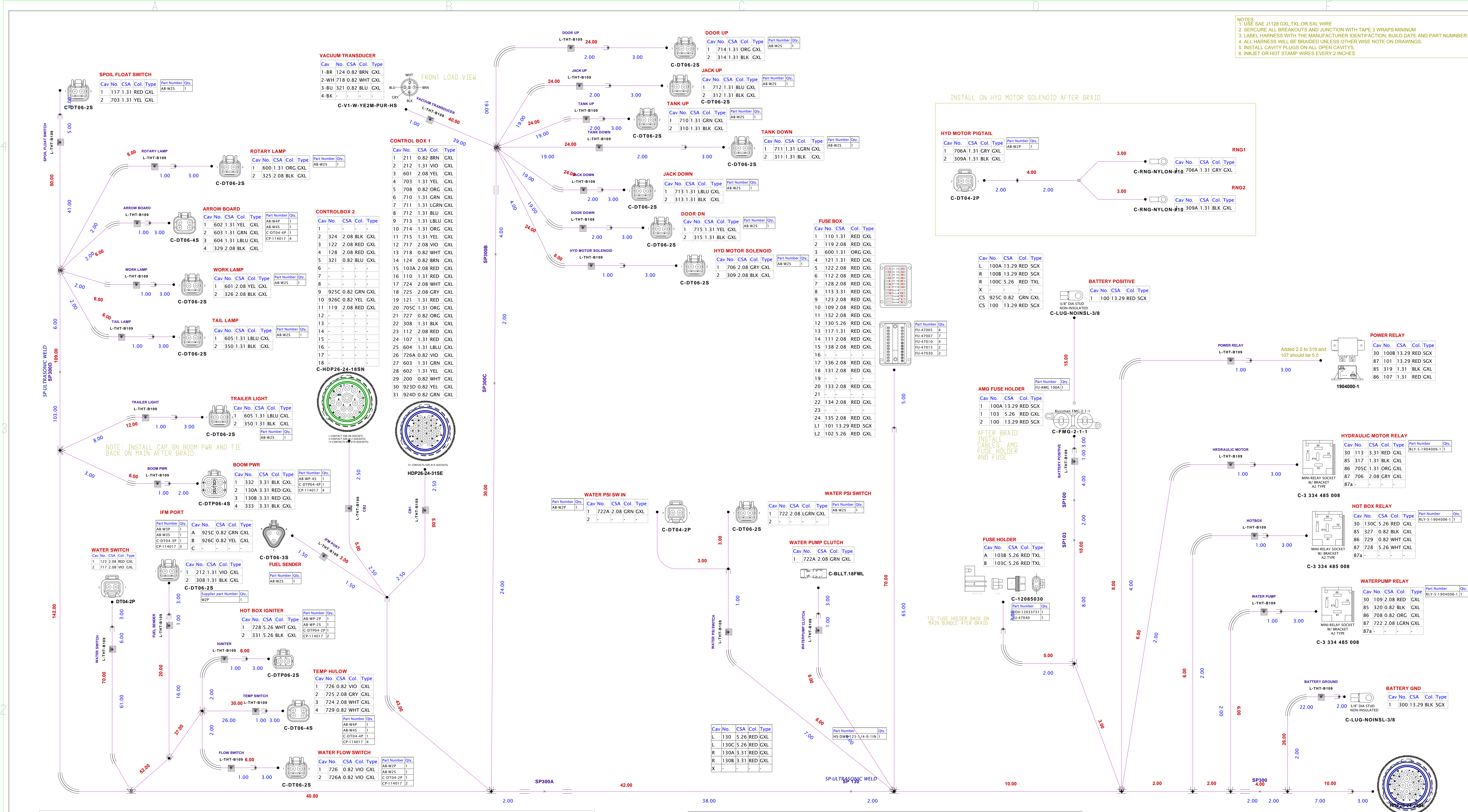


- 1. USE SAE J1128 OXL TXL OR SKL WIRE
- 2. SECURE ALL BREAKOUTS AND JUNCTION WITH TAPE 3 WRAPS MINIMUM
- 3. LABEL HARNESS WITH THE MANUFACTURER IDENTIFICATION, BUILD DATE AND PART NUMBER.
- 4. ALL HARNESS WILL BE BROWN UNLESS OTHERWISE NOTED ON CAD DRAWINGS.
- 5. INSTALL CAVITY PLUGS ON ALL OPEN CAVITIES.
- 6. INJECTOR HOT STAMP WIRES EVERY 2 INCHES



Stamp	GAUGE	SIZE	LENGTH	SUPPLIER PART NUMBER	TERMINAL	FROM CONNECTOR	TERMINAL	TO CONNECTOR	TERMINAL	TO CONNECTOR	TERMINAL	FROM CONNECTOR	TERMINAL	TO CONNECTOR	TERMINAL	FROM CONNECTOR	TERMINAL	TO CONNECTOR	TERMINAL	FROM CONNECTOR	TERMINAL	TO CONNECTOR
100	6	RED	15	3088	16	1121	16	2121	16	1121	16	1121	16	2121	16	1121	16	2121	16	1121	16	2121
100	6	RED	15	3088	16	1121	16	2121	16	1121	16	1121	16	2121	16	1121	16	2121	16	1121	16	2121
100	6	RED	15	3088	16	1121	16	2121	16	1121	16	1121	16	2121	16	1121	16	2121	16	1121	16	2121

Index	Description	Supplier Part Number	Supplier Name	Quantity	Length	Index	Description	Supplier Part Number	Supplier Name	Quantity	Length
1	LOCK WELD DT 2 WAY RCPT	WIP	Lock Distribution (Deutsch)	1	50	12	100 1.31 RED GXL	1121	CSA	1	50
2	LOCK WELD DT 2 WAY PLUG	WIP	Lock Distribution (Deutsch)	1	50	13	100 1.31 RED GXL	1121	CSA	1	50
3	LOCK WELD DT 4 WAY RCPT	WIP	Lock Distribution (Deutsch)	1	50	14	100 1.31 RED GXL	1121	CSA	1	50

Index	Description	Supplier Part Number	Supplier Name	Quantity	Length
1	LOCK WELD DT 2 WAY RCPT	WIP	Lock Distribution (Deutsch)	1	50
2	LOCK WELD DT 2 WAY PLUG	WIP	Lock Distribution (Deutsch)	1	50
3	LOCK WELD DT 4 WAY RCPT	WIP	Lock Distribution (Deutsch)	1	50

